

CHARTER SCHOOL PERFORMANCE CERTIFICATE

This performance certificate is executed on this 14th day of June 2018, by and between the Idaho Public Charter School Commission (the “Authorizer”), and Idaho Virtual Academy, Incorporated (the “School”), an independent public school organized as an Idaho nonprofit corporation and established under the Public Charter Schools Law, Idaho Code Section 33-5201 *et seq*, as amended (the “Charter Schools Law.”)

RECITALS

WHEREAS, the School began operations in the year 2002; and

WHEREAS, on October 28, 2004, the Authorizer approved a petition for the transfer of the School’s charter to the Authorizer; and

WHEREAS, the School’s charter was renewed on March 1, 2018, for a five-year term of operations,

NOW THEREFORE in consideration of the foregoing recitals and mutual understandings, the Authorizer and the School agree as follows:

SECTION 1: AUTHORIZATION OF CHARTER SCHOOL

- A. Continued Operation of School.** Pursuant to the Charter Schools Law, the Authorizer hereby approves the continued operation of the School on the terms and conditions set forth in this Charter School Performance Certificate (the “Certificate”). The approved Charter is attached to this Certificate as Appendix C.
- B. Term of Agreement.** This Certificate is effective as of July 1, 2018, and shall continue through June 30, 2023, unless earlier terminated as provided herein.

SECTION 2: SCHOOL GOVERNANCE

- A. Governing Board.** The School shall be governed by a board (the “Charter Board”) in a manner that is consistent with the terms of this Certificate so long as such provisions are in accordance with state, federal, and local law. The Charter Board shall have final authority and responsibility for the academic, financial, and organizational performance of the School. The Charter Board shall also have authority for and be responsible for policy and operational decisions of the School, although nothing herein shall prevent the Charter Board from delegating decision-making authority for policy and operational decisions to officers, employees and agents of the School, as well as third party management providers.

- B. Articles of Incorporation and Bylaws.** The articles of incorporation and bylaws of the entity holding the charter shall provide for governance of the operation of the School as a nonprofit corporation and public charter school and shall at all times be consistent with all applicable law and this Certificate. The School shall notify the Authorizer of any modification to the Articles or Bylaws within five (5) business days of approval by the Charter Board.
- C. Charter Board Composition.** The composition of the Charter Board shall at all times be determined by and consistent with the Articles and Bylaws and all applicable law and policy. The Charter Board shall notify the Authorizer of any changes to its composition and provide an amended School Leadership Roster within five (5) business days of their taking effect.

SECTION 3: EDUCATIONAL PROGRAM

- A. School Mission.** The mission of the School is as follows: Building a community of engaged learners.
- B. Grades Served.** The School may serve students in grades K-12.
- C. Design Elements.** The School shall implement and maintain the following essential design elements of its educational program:
- **Innovative and Effective Educational Program:** Idaho Virtual Academy seeks to develop those qualities of mind and character that will help students become active, thoughtful, and responsible citizens. Furthermore, it aims to help students meet high expectations by offering an individualized, rigorous, self-paced, and mastery-based instructional program that incorporates significant parental involvement.
 - **Rigorous Curriculum:** Idaho Virtual Academy utilizes the award winning K12 curriculum.
 - **Effective Teachers:** Idaho Virtual Academy is committed to employing highly qualified, innovative and committed teachers. Professional growth is supported through meaningful professional development focused on continuous improvement.
 - **Parental Involvement:** When parents become active and informed partners in their child's education, test scores rise, drop-out rates fall, and the active pursuit of learning becomes a compelling focus for each family.
 - **Partnership:** Teachers, parents and students uniquely connected in a 21st Century Learning Community designed to support and enhance individual student learning.
 - **21st Century Skills:** Students will gain the skills, knowledge and expertise to succeed in work and life in the 21st century.
 - **Performance based accountability:** IDVA uses technology to alter the typical school day and school year. Mastering curriculum early allows students to move ahead and those who need extra time or remediation are able to work at an individualized pace. Student mastery of State achievement standards is measured through formative and

interim assessment throughout the school year and, additionally, at the end of each school year through the state assessment system.

- D. Standardized Testing.** Students of the School shall be tested with the same standardized tests as other Idaho public school students.
- E. Accreditation.** The School shall be accredited as provided by rule of the state board of education.

SECTION 4: AUTHORIZER ROLE AND RESPONSIBILITIES

- A. Oversight Allowing Autonomy.** The Authorizer shall comply with the provisions of Charter School Law and the terms of this Certificate in a manner that does not unduly inhibit the autonomy of the School. The Authorizer's Role will be to evaluate the School's outcomes according to this Certificate and the Performance Framework rather than to establish the process by which the School achieves the outcomes sought.
- B. Charter School Performance Framework.** The Charter School Performance Framework ("Performance Framework") is attached and incorporated into this agreement as Appendix B. The Performance Framework shall be used to evaluate the School's academic, financial and operational performance, and shall supersede and replace any and all assessment measures, educational goals and objectives, financial operations metrics, and operational performance metrics set forth in the Charter and not explicitly incorporated into the Performance Framework. The specific terms, form and requirements of the Performance Framework, including any required indicators, measures, metrics, and targets, are determined by the Authorizer and will be binding on the School.
- C. Authorizer to Monitor School Performance.** The Authorizer shall monitor and report on the School's progress in relation to the indicators, measures, metrics and targets set out in the Performance Framework. The School shall be subject to a formal review of its academic, mission-specific, operational, and financial performance at least annually.
- D. School Performance.** The School shall achieve an accountability designation of *Good Standing* or *Honor* on each of the three sections of the Performance Framework. In the event the School is a party to a third party management contract which includes a deficit protection clause, the School shall be exempt from some or all measures within the financial portion of the Performance Framework. In accordance with Charter School Law, the Authorizer shall renew any charter in which the public charter school met all of the terms of its performance certificate at the time of renewal.
- E. Performance Framework As Basis For Renewal of Charter.** The School's performance in relation to the indicators, measures, metrics and targets set forth in the Academic and Mission-Specific, Operational and Financial sections of the Performance Framework shall provide the basis upon which the Authorizer will decide whether to renew the School's Charter at the end of the Certificate term. As part of the Performance Framework, the Authorizer agrees to consider mission-specific, rigorous, valid, and reliable indicators of the School's performance. These negotiated indicators will be

included in the Mission-Specific portion of the Academic and Mission Specific section of the Performance Framework.

- F. Authorizer's Right to Review.** The School will be subject to review of its academics, operations and finances by the Authorizer, including related policies, documents and records, when the Authorizer deems such review necessary. The Authorizer shall conduct its reviews in a manner that does not unduly inhibit the autonomy granted to the School.
- G. Site Visits.** In addition to the above procedures, the Charter School shall grant reasonable access to, and cooperate with, the Authorizer, its officers, employees and other agents, including allowing site visits by the Authorizer, its officers, employees, or other agents, for the purpose of allowing the Authorizer to fully evaluate the operations and performance of the School. The Authorizer may conduct a site visit at any time if the Authorizer has reasonable concern regarding the operations and performance of the School. The Authorizer will provide the School reasonable notice prior to its annual site visit to the School. The School shall have an opportunity to provide a written response to the site visit report no later than fourteen (14) days prior to the meeting at which the report is to be considered by the Authorizer. If no written response is provided, the School shall have the opportunity to respond orally to the site visit report at the meeting.
- H. Required Reports.** The School shall prepare and submit reports regarding its governance, operations, and/or finances according to the established policies of and upon the request of the Authorizer. However, to the extent possible, the Authorizer shall not request reports from the School that are otherwise available through student information systems or other data sources reasonably available to the Authorizer.

SECTION 5: SCHOOL OPERATIONS

- A. In General.** The School and the Charter Board shall operate at all times in accordance with all federal and state laws, local ordinances, regulations and Authorizer policies applicable to charter schools.
- B. Maximum Enrollment.** The maximum number of students who may be enrolled in the school will be determined by the Board each school year, no later than the annual meeting prior to that school year. The Board must also establish an enrollment deadline(s). The Charter Board may establish different enrollment caps for the general program or specific grade levels or programs. As defined in IDAPA 08.02.04 section 203.02, caps shall not be placed on special education or alternative programs. The enrollment cap(s) and/or deadline must be publicly posted as soon as reasonably possible after the Board makes its annual determination and remain posted for the remainder of the affected school year. Students shall be enrolled until the cap or deadline is reached, whichever occurs first. Thereafter, student applications will be accepted for enrollment during the following school year.
- C. Enrollment Policy.** The School shall make student recruitment, admissions, enrollment and retention decisions in a nondiscriminatory manner and without regard to race, color, creed, national origin, sex, marital status, religion, ancestry, disability or need for special

education services. In no event may the School limit admission based on race, ethnicity, national origin, disability, gender, income level, athletic ability, or proficiency in the English language. If there are more applications to enroll in the charter school than there are spaces available, the charter school shall select students to attend using a random selection process that shall be publicly noticed and open to the public.

- A. School Facilities.** 1965 S. Eagle Road, Meridian, ID 83642. The School shall provide reasonable notification to the Authorizer of any change in the location of its facilities.
- B. Attendance Area.** The School's primary attendance area is as follows: State of Idaho.
- C. Staff.** Instructional staff shall be certified teachers as provided by rule of the state board of education. All full-time staff members of the School will be covered by the public employee retirement system, federal social security, unemployment insurance, worker's compensation insurance, and health insurance.
- D. Alignment with All Applicable Law.** The School shall comply with all applicable federal and state laws, rules, and regulations. In the event any such laws, rules, or regulations are amended, the School shall be bound by any such amendment upon the effective date of said amendment.

SECTION 6: SCHOOL FINANCE

- A. General.** The School shall comply with all applicable financial and budget statutes, rules, regulations, and financial reporting requirements, as well as the requirements contained in the Performance Framework incorporated into this agreement as Appendix B.
- B. Financial Controls.** At all times, the Charter School shall maintain appropriate governance and managerial procedures and financial controls which procedures and controls shall include, but not be limited to: (1) commonly accepted accounting practices and the capacity to implement them (2) a checking account; (3) adequate payroll procedures; (4) procedures for the creation and review of monthly and quarterly financial reports, which procedures shall specifically identify the individual who will be responsible for preparing such financial reports in the following fiscal year; (5) internal control procedures for cash receipts, cash disbursements and purchases; and (6) maintenance of asset registers and financial procedures for grants in accordance with applicable state and federal law.
- C. Financial Audit.** The School shall submit audited financial statements from an independent auditor to the Authorizer no later than November 1 of each year.
- D. Annual Budgets.** The School shall adopt a budget for each fiscal year, prior to the beginning of the fiscal year. The budget shall be in the Idaho Financial Accounting Reporting Management Systems (IFARMS) format and any other format as may be reasonably requested by the Authorizer.

SECTION 7: TERMINATION, NON-RENEWAL AND REVOCATION

- A. Termination by the School.** Should the School choose to terminate its Charter before the expiration of the Certificate, it may do so upon written notice to the Authorizer. Any school terminating its charter shall work with the Authorizer to ensure a smooth and orderly closure and transition for students and parents, as guided by the public charter school closure protocol established by the Authorizer attached as Appendix D.
- B. Nonrenewal.** The Authorizer may non-renew the Charter at the expiration of the Certificate if the School failed to meet one (1) or more of the terms of its Certificate. Any school which is not renewed shall work with the Authorizer to ensure a smooth and orderly closure and transition for students and parents, as guided by the public charter school closure protocol established by the Authorizer attached as Appendix D.
- C. Revocation.** The School's Charter may be revoked by the Authorizer if the School has failed to meet any of the specific, written renewal conditions attached, if applicable, as Appendix A for necessary improvements established pursuant to Idaho Code§ 33-5209B(1) by the dates specified. Revocation may not occur until the public charter school has been afforded a public hearing, unless the Authorizer determines that continued operation of the public charter school presents an imminent public safety issue. If the School's Charter is revoked, the School shall work with the Authorizer ensure a smooth and orderly closure and transition for students and parents, as guided by the public charter school closure protocol established by the Authorizer attached as Appendix D.
- D. Dissolution.** Upon termination of the Charter for any reason by the Charter Board, or upon nonrenewal or revocation, the Charter Board will supervise and have authority to conduct the winding up of the business and other affairs of the School; provided, however, that in doing so the Authorizer will not be responsible for and will not assume any liability incurred by the School. The Charter Board and School personnel shall cooperate fully with the winding up of the affairs of the School.
- E. Disposition of School's Assets upon Termination or Dissolution.** Upon termination of the Charter for any reason, any assets owned by the School shall be distributed in accordance with Charter Schools Law.

SECTION 8: MISCELLANEOUS

- A. No Employee or Agency Relationship.** None of the provisions of this Certificate will be construed to create a relationship of agency, representation, joint venture, ownership, or employment between the Authorizer and the School.
- B. Additional Services.** Except as may be expressly provided in this Certificate, as set forth in any subsequent written agreement between the School and the Authorizer, or as may be required by law, neither the School nor the Authorizer shall be entitled to the use of or access to the services, supplies, or facilities of the other.
- C. No Third-Party Beneficiary.** This Certificate shall not create any rights in any third parties, nor shall any third party be entitled to enforce any rights or obligations that may be possessed by either party to this Certificate.

D. Amendment. This Certificate may be amended by agreement between the School and the Authorizer in accordance with Authorizer policy. All amendments must be in writing and signed by the School and the Authorizer.

IN WITNESS WHEREOF, the Authorizer and the School have executed this Performance Certificate to be effective July 1, 2018.



Chairperson, Idaho Public Charter School Commission




Chairperson, Idaho Virtual Academy Board

Amendment 1

IN WITNESS WHEREOF, the Authorizer and Idaho Virtual Academy (IDVA) have executed this Amendment to their Performance Certificate to add grades 6-8 into their alternative school program. The Amendment to IDVA's Performance Certificate is effective as of April 23, 2019.



Alan Reed
Chairman, Idaho Public Charter School Commission



Bjorn Handeen
Chairman of the Board, Idaho Virtual Academy

Amendment 2

WITNESS WHEREOF, the Authorizer and Idaho Virtual Academy, Incorporated have executed this amendment to the Performance Certificate, effective 4/15/2021:

- 1) To make the follow change to the “Staff and Administrative Composition” section on page 3 of the School’s charter:

Replace “The teachers of IDVA are employed by the Academy through the use of Idaho Standard Teachers’ Contracts.” With
“Certified staff will be employed through the use of contracts and in accordance with Idaho statute.”

Alan Reed

Alan Reed (Apr 19, 2021 15:06 MDT)

Chairman, Idaho Public Charter School Commission

Bjorn Handeen

Bjorn Handeen (Apr 19, 2021 17:31 PDT)

Chairman, Idaho Virtual Academy, Incorporated Board

Amendment 3

IN WITNESS WHEREOF, the Authorizer and Idaho Virtual Academy have executed this amendment to their Performance Certificate to the Performance Framework revisions, adopted by the IPCSC in June of 2020 (Appendix B), effective as of January 4, 2023.

Alan L Reed
Alan L Reed (Jan 5, 2023 15:15 MST)

Jan 5, 2023

Chairman, Idaho Public Charter School Commission

Jeffrey D. Thompson

Chairman, Idaho Virtual Academy

Appendix A: Conditions of Authorization/Renewal

Appendix B: Performance Framework

Appendix C: Charter

Appendix D: Public Charter School Closure Protocol

Appendix A: Conditions of Authorization / Renewal

1. Regarding academic growth in K-8 math:

By June 30, 2021, at least fifty-nine percent (59%) of IDVA's continuously enrolled, general education students in grades K-8 will make adequate academic growth to achieve math proficiency on the ISAT within 3 years or by 10th grade, whichever comes first.

This condition is based upon a rate of increase sufficient to promote the school's ability to achieve a "meets standard" rating for the specified subset of students on Academic Measure 3a (Criterion-Referenced Growth in Math) in the performance framework adopted by the PCSC in May 2017, by the end of the next performance certificate term (June 30, 2023).

The outcome shall be calculated using Academic Measure 3a (Criterion-Referenced Growth in Math). References to the ISAT shall apply to any other statewide assessment selected to replace the ISAT by SBAC in the event of state-level requirement changes.

"Continuously enrolled" is defined pursuant to IDAPA 08.02.03.112.04.a(i); that is, "a student who is enrolled continuously in the same public school from the end of the first eight (8) weeks or fifty-six (56) calendar days of the school year through the state approved spring testing administration period, not including the make-up portion of the test window, will be included in the calculation... A student is continuously enrolled if he/she has not transferred or dropped out of the public school. Students who are serving suspensions are still considered to be enrolled students."

"General education" refers to IDVA students who are not enrolled in IDVA's alternative program.

Regardless of whether or not IDVA agrees to fulfill the specific condition above, IDVA remains responsible for meeting the terms and conditions contained in its signed performance certificate effective July 1, 2018, through June 30, 2023, which will incorporate the performance framework adopted by the Commission in May 2017.

Appendix B: Performance Framework



PERFORMANCE FRAMEWORK GUIDANCE: ACADEMIC MEASURES

Adopted 8/13/2020

Revised 4/14/2022

Idaho Public Charter School Commission

304 North 8th Street, Room 242

Boise, Idaho 83702

Phone: (208)332-1561

pcsc@osbe.idaho.gov

Alan Reed, Chairman

Jenn Thompson, Director

Academic Framework - Adopted 8/13/20

Revised 4/14/22

Page 1

ACADEMIC MEASURES

All School Measures

1. Math Proficiency
2. ELA Proficiency
3. Math Growth
4. ELA Growth
5. Literacy Proficiency
6. College and Career Readiness

Comparison Group: Specific to school.

1. MATH PROFICIENCY

Proficiency Rate: The IPCSC will use the proficiency rates as determined by the Idaho Accountability Framework and reported via the Idaho Report Card.

Math and ELA Proficiency Rubric	
Exceeds Standard	The school's proficiency rate is greater than one standard deviation above the mean of the identified comparison group, OR The school's proficiency average is in 90 th percentile of all Idaho schools.
Meets Standard	The school's proficiency rate is equal to the mean or falls between the mean and one standard deviation above the mean of the identified comparison group.
Approaches Standard	The school's proficiency rate falls between the mean and one standard deviation below the mean of the identified comparison group.
Does Not Meet Standard	The school's proficiency rate is more than one standard deviation below the mean of the identified comparison group, OR the school has been identified for comprehensive or targeted support for three consecutive years as per the Idaho Consolidated Plan.

2. ELA PROFICIENCY

Proficiency Rate: The IPCSC will use the proficiency rates as determined by the Idaho Accountability Framework and reported via the Idaho Report Card.

Math and ELA Proficiency Rubric	
Exceeds Standard	The school's proficiency rate is greater than one standard deviation above the mean of the identified comparison group, OR The school's proficiency average is in 90 th percentile of all Idaho schools.
Meets Standard	The school's proficiency rate is equal to the mean OR Falls between the mean and one standard deviation above the mean of the identified comparison group.
Approaches Standard	The school's proficiency rate falls between the mean and one standard deviation below the mean of the identified comparison group.
Does Not Meet Standard	The school's proficiency rate is more than one standard deviation below the mean of the identified comparison group, OR the school has been identified for comprehensive or targeted support for three consecutive years as per the Idaho Consolidated Plan.

3. MATH GROWTH

Growth Rate: The IPCSC will use the proficiency rates as determined by the Idaho Accountability Framework and reported via the Idaho Report Card.

Growth Rubric Math	
Exceeds Standard	The percentage of students in grades 3-8 who did not achieve proficiency on the current year's assessment but who did make adequate growth toward proficiency is greater than one standard deviation above the mean of the identified comparison group, OR The school's growth rate is in the 90 th percentile of all Idaho public schools.
Meets Standard	The percentage of students in grades 3-8 who did not achieve proficiency on the current year's assessment but who did make adequate growth toward proficiency is equal to the mean or falls between the mean and one standard deviation above the mean of the identified comparison group, OR The growth rate increased by at least 10% over the previous year.
Approaches Standard	The percentage of students in grades 3-8 who did not achieve proficiency on the current year's assessment but who did make adequate growth toward proficiency falls between the mean and one standard deviation below the mean of the identified comparison group.
Does Not Meet Standard	The percentage of students in grades 3-8 who did not achieve proficiency on the current year's assessment made adequate growth toward proficiency is more than one standard deviation below the mean of the identified comparison group.

4. ELA GROWTH

Growth Rate: The IPCSC will use the proficiency rates as determined by the Idaho Accountability Framework and reported via the Idaho Report Card.

Growth Rubric ELA	
Exceeds Standard	The percentage of students in grades 3-8 who did not achieve proficiency on the current year's assessment but who did make adequate growth toward proficiency is greater than one standard deviation above the mean of the identified comparison group, OR The school's growth rate is in the 90 th percentile of all Idaho public schools.
Meets Standard	The percentage of students in grades 3-8 who did not achieve proficiency on the current year's assessment but who did make adequate growth toward proficiency is equal to the mean or falls between the mean and one standard deviation above the mean of the identified comparison group, OR The growth rate increased by at least 10% over the previous year.
Approaches Standard	The percentage of students in grades 3-8 who did not achieve proficiency on the current year's assessment but who did make adequate growth toward proficiency falls between the mean and one standard deviation below the mean of the identified comparison group.
Does Not Meet Standard	The percentage of students in grades 3-8 who did not achieve proficiency on the current year's assessment made adequate growth toward proficiency is more than one standard deviation below the mean of the identified comparison group.

5. LITERACY PROFICIENCY

Literacy Proficiency Rate: The IPCSC will use the proficiency rates as determined by the Idaho Accountability Framework and reported via the Idaho Report Card.

Literacy Proficiency Rubric	
Exceeds Standard	<p>One of the following is true:</p> <ul style="list-style-type: none">• The school's proficiency rate on the spring administration of the statewide literacy assessment is greater than one standard deviation above the mean of the identified comparison group;• the school's proficiency rate on the spring administration of the statewide literacy assessment is at or above 90%; <p>OR</p> <ul style="list-style-type: none">• The fall to spring change in proficiency rate is 20% or greater.
Meets Standard	<p>The school's proficiency on the spring administration of the statewide literacy assessment is equal to the mean or within one standard deviation above the mean of the identified comparison group; OR The school's fall to spring change in proficiency rate is between 10%-19%.</p>
Approaches Standard	<p>The school's proficiency on the spring administration of the statewide literacy assessment falls within one standard deviation below the mean of the identified comparison group.</p>
Does Not Meet Standard	<p>The school's proficiency rate on the spring administration of the statewide literacy assessment is more than one standard deviation below the mean of the identified comparison group.</p>

6. COLLEGE AND CAREER READINESS

Adjusted Cohort Graduation Rate (ACGR): Alternative schools will be evaluated based on their 5-Year ACGR. All other schools will be evaluated based on their 4-Year ACGR.

Graduation Rate: The IPCSC will use either the 4-Year ACGR as determined by the Idaho Accountability Framework and reported via the Idaho Report Card.

C&C Readiness Rubric	
Exceeds Standard	The school's 4-Year ACGR is greater than one standard deviation above the identified comparison group, OR The school's ACGR is 90%.
Meets Standard	The school's 4-Year ACGR is equal to the mean OR Falls between the mean and one standard deviation above the mean of the identified comparison group.
Approaches Standard	The school's 4-Year ACGR falls between the mean and one standard deviation below the mean of the identified comparison group.
Does Not Meet Standard	The school's 4-Year ACGR is more than one standard deviation below the identified comparison group.

ADDITIONAL ACADEMIC MEASURES FOR ALTERNATIVE PROGRAMS GRADES 6-12

Standard Academic Measures

1. Math Proficiency
2. ELA Proficiency
3. College and Career Readiness (5yr ACGR)

In addition to the standard measures above, the following measures will apply to alternative programs.

Alternative Program Measures

1. Math Content Mastery
2. ELA Content Mastery
3. Progress Toward Graduation
4. College and Career Readiness- Alternative

In order to be considered an alternative program, 100% of the students enrolled in the program must meet the statutory definition of “at-risk”.

Comparison Group: the comparison group for alternative programs includes all schools and IPCSC programs serving 100% at-risk student populations.

MATH PROFICIENCY (Standard Measure)

Proficiency Rate: The IPCSC will use the proficiency rates as determined by the Idaho Accountability Framework and reported via the Idaho Report Card.

Math and ELA Proficiency Rubric	
Exceeds Standard	The school's proficiency rate is greater than one standard deviation above the mean of the identified comparison group, OR The school's proficiency average is in 90 th percentile of all Idaho schools.
Meets Standard	The school's proficiency rate is equal to the mean or falls between the mean and one standard deviation above the mean of the identified comparison group.
Approaches Standard	The school's proficiency rate falls between the mean and one standard deviation below the mean of the identified comparison group.
Does Not Meet Standard	The school's proficiency rate is more than one standard deviation below the mean of the identified comparison group, OR the school has been identified for comprehensive or targeted support for three consecutive years as per the Idaho Consolidated Plan.

MATH CONTENT MASTERY ALTERNATIVE

Note: This measure will be considered in addition to the standard proficiency measure for schools classified as alternative. Non-alternative schools may include this measure as a mission specific goal, in addition to the standard measures, if they feel this data would help the IPCSC understand their school's academic outcomes.

Idaho graduation requirements only require math to be taken in three of the four years of high school. Alternative schools structure this requirement differently. For the purposes of this measure, the total number of continuously enrolled students will exclude students enrolled in a grade for which the school does not require math to be taken.

Alt Proficiency Rubric	
Exceeds Standard	The percentage of continuously enrolled students who have either already completed all ELA/Math graduation requirements or successfully earned credit for the equivalent of 1 year of instruction in the discipline (ELA or Math) is more than 10% above the school's percentage in the previous year, OR The percentage in the current year is greater than 80%.
Meets Standard	The percentage of continuously enrolled students who have either already completed all ELA/Math graduation requirements OR Successfully earned credit for the equivalent of 1 year of instruction in the discipline (ELA or Math) is equal to or up to 10% greater than the school's percentage in the previous year.
Approaches Standard	The percentage of continuously enrolled students who have either already completed all ELA/Math graduation requirements OR Successfully earned credit for the equivalent of 1 year of instruction in the discipline (ELA or Math) is below, but no more than 10% below, the school's percentage in the previous year.
Does Not Meet Standard	The percentage of continuously enrolled students who have either already completed all ELA/Math graduation requirements OR Successfully earned credit for the equivalent of 1 year of instruction in the discipline (ELA or Math) is more than 10% below the school's percentage in the previous year.

ELA PROFICIENCY (Standard Measure)

Proficiency Rate: The IPCSC will use the proficiency rates as determined by the Idaho Accountability Framework and reported via the Idaho Report Card.

Math and ELA Proficiency Rubric	
Exceeds Standard	The school's proficiency rate is greater than one standard deviation above the mean of the identified comparison group, OR The school's proficiency average is in 90 th percentile of all Idaho schools.
Meets Standard	The school's proficiency rate is equal to the mean OR Falls between the mean and one standard deviation above the mean of the identified comparison group.
Approaches Standard	The school's proficiency rate falls between the mean and one standard deviation below the mean of the identified comparison group.
Does Not Meet Standard	The school's proficiency rate is more than one standard deviation below the mean of the identified comparison group, OR the school has been identified for comprehensive or targeted support for three consecutive years as per the Idaho Consolidated Plan.

ELA CONTENT MASTERY ALTERNATIVE

Note: This measure will be considered in addition to the standard proficiency measure for schools classified as alternative. Non-alternative schools may include this measure as a mission specific goal, in addition to the standard measures, if they feel this data would help the IPCSC understand their school's academic outcomes.

Alt Proficiency Rubric	
Exceeds Standard	The percentage of continuously enrolled students who have either already completed all ELA/Math graduation requirements or successfully earned credit for the equivalent of 1 year of instruction in the discipline (ELA or Math) is more than 10% above the school's percentage in the previous year, OR The percentage in the current year is greater than 80%.
Meets Standard	The percentage of continuously enrolled students who have either already completed all ELA/Math graduation requirements OR Successfully earned credit for the equivalent of 1 year of instruction in the discipline (ELA or Math) is equal to or up to 10% greater than the school's percentage in the previous year.
Approaches Standard	The percentage of continuously enrolled students who have either already completed all ELA/Math graduation requirements OR successfully earned credit for the equivalent of 1 year of instruction in the discipline (ELA or Math) is below, but no more than 10% below, the school's percentage in the previous year.
Does Not Meet Standard	The percentage of continuously enrolled students who have either already completed all ELA/Math graduation requirements OR Successfully earned credit for the equivalent of 1 year of instruction in the discipline (ELA or Math) is more than 10% below the school's percentage in the previous year.

9-12 PROGRESS TOWARD GRADUATION ALTERNATIVE

Note: This measure will be considered in addition to the standard growth measure for schools classified as alternative. Non-alternative schools may include this measure as a mission specific goal, in addition to the standard measures, if they feel this data would help the IPCSC understand their school's academic outcomes.

For the purpose of this measure, a quarter of instructional enrollment will be calculated based on the number of instructional days reported and may be further modified by mutual agreement of the school and the IPCSC based on the alternative school's course completion structure.

Alt Growth Rubric	
Exceeds Standard	More than 75% of students enrolled in the alternative program earned 2.9 credits for every instructional quarter for which the student was enrolled for 90% of the days in that instructional quarter.
Meets Standard	Between 65% and 75% of students enrolled in the alternative program earned 2.9 credits for every instructional quarter for which the student was enrolled for 90% of the days in that instructional quarter falls, OR his percentage is less than 65% BUT at least 5% greater than in the previous year.
Approaches Standard	Less than 65% of students enrolled in the alternative program earned 2.9 credits for every instructional quarter for which the student was enrolled for 90% of the days in that instructional quarter AND this percentage is between 3% and 5% greater than the previous year.
Does Not Meet Standard	Less than 65% of students enrolled in the alternative program earned 2.9 credits for every instructional quarter for which the student was enrolled for 90% of the days in that instructional quarter AND this percentage is less than 3% greater than in the previous year.

COLLEGE AND CAREER READINESS (Standard Measure)

Adjusted Cohort Graduation Rate (ACGR): Alternative schools will be evaluated based on their 5-Year ACGR. All other schools will be evaluated based on their 4-Year ACGR.

Graduation Rate: The IPCSC will use the 5-Year ACGR as determined by the Idaho Accountability Framework and reported via the Idaho Report Card.

C&C Readiness Rubric	
Exceeds Standard	The school's 5-Year ACGR is greater than one standard deviation above the identified comparison group, OR The school's ACGR is 90%.
Meets Standard	The school's 5-Year ACGR is equal to the mean OR Falls between the mean and one standard deviation above the mean of the identified comparison group.
Approaches Standard	The school's 5-Year ACGR falls between the mean and one standard deviation below the mean of the identified comparison group.
Does Not Meet Standard	The school's 5-Year ACGR is more than one standard deviation below the identified comparison group.

COLLEGE AND CAREER READINESS – ALTERNATIVE

Note: This measure will be considered in addition to the standard college and career readiness measure for schools classified as alternative. Non-alternative schools may include this measure as a mission specific goal, in addition to the standard measures, if they feel this data would help the IPCSC understand their school's academic outcomes.

C&C Readiness Rubric	
Exceeds Standard	The percentage of the not continuously enrolled students who were enrolled for at least 45 days and were eligible to graduate in the same academic year (plus summer) who graduated is more than 10% above the school's percentage in the previous year, OR The percentage in the current year is greater than 75%.
Meets Standard	The percentage of the not continuously enrolled students who were enrolled for at least 45 days and were eligible to graduate in the same academic year (plus summer) who graduated is equal to OR Up to 10% greater than the school's percentage in the previous year.
Approaches Standard	The percentage of the not continuously enrolled students who were enrolled for at least 45 days and were eligible to graduate in the same academic year (plus summer) who graduated is below, but no more than 10% below the school's percentage in the previous year.
Does Not Meet Standard	The percentage of the not continuously enrolled students who were enrolled for at least 45 days and were eligible to graduate in the same academic year (plus summer) who graduated is more than 10% below the school's percentage in the previous year.

OPERATIONAL MEASURES

BOARD STEWARDSHIP

1. Governance Structure
2. Governance Oversight
3. Governance Compliance

OPERATIONAL MANAGEMENT

4. Student Services
5. Data Security and Information Transparency
6. Facility and Services
7. Operational Compliance

BOARD GOVERNANCE

1. Governance Structure Rubric

Data Sources: Board bylaws, articles of incorporation, and any courtesy letters or notifications issued to the school by entities responsible for oversight or enforcement.

Governance Structure Rubric	
Exceeds Standard	The school has met standard for 3 or more consecutive years, including the most recently completed school year.
Meets Standard	<ul style="list-style-type: none">• Board Bylaws are compliant with ID law.• Articles of Incorporation are current.• No investigations were conducted into either ethical behavior or conflict of interest regarding any board director.• The board did not experience an Open Meeting Law violation that needed to be cured this year.
Approaches Standard	The school was informed of or became aware of non-compliance and action to correct the issue was taken within 30 days.
Does Not Meet Standard	The school was informed of or became aware of non-compliance and action to correct the issue was not taken within 30 days.

2. Governance Oversight Rubric

Data Sources: Board meeting minutes, school policies, continuous improvement plan (or other strategic planning evidence if submitted by the school), and verification of submission of annual administrator evaluation.

Governance Oversight Rubric	
Exceeds Standard	The school has met standard for 3 or more consecutive years, including the most recently completed school year.
Meets Standard	<ul style="list-style-type: none">• The board reviews academic data in a timely and thorough manner.• The board reviews financial reports in a timely and thorough manner.• The board maintains compliant policies.• The board engages in strategic planning.• The board conducts a compliant annual evaluation of their school leader and/or management organization.
Approaches Standard	The school was informed of or became aware of non-compliance and action to correct the issue was taken within 30 days.
Does Not Meet Standard	The school was informed of or became aware of non-compliance and action to correct the issue was not taken within 30 days.

3. Governance Compliance Rubric

Data Sources: If applicable, courtesy letters/notifications of concerns, investigation, or findings issued to the school by entities responsible for oversight or enforcement, and any documentation of correction provided by the school.

Governance Compliance Rubric	
Exceeds Standard	The school has met standard for 3 or more consecutive years, including the most recently completed school year.
Meets Standard	The IPCSC did not issue any courtesy letters or notify an external investigative body of compliance concerns this year.
Approaches Standard	The school was informed of or became aware of non-compliance and action to correct the issue was taken within 30 days.
Does Not Meet Standard	The school was informed of or became aware of non-compliance and action to correct the issue was not taken within 30 days.

OPERATIONAL MANAGEMENT

4. Student Services Rubric

Data Sources: If applicable, any notifications or courtesy letters issued by the SDE or SBOE which required corrective action with regard to the school's ELL, SPED, or College and Career Readiness programs, as well as any documentation submitted by the school evidencing correction.

Student Services Rubric	
Exceeds Standard	The school has met standard for 3 or more consecutive years, including the most recently completed school year.
Meets Standard	All of the following are true: <ul style="list-style-type: none">• The school's English Language Learner program is in good standing;• The school's Special Education program is in good standing; The school's college and career readiness program is in good standing; and• The school's federal programs are in good standing.
Approaches Standard	The school was informed of or became aware of non-compliance and action to correct the issue was taken within 30 days.
Does Not Meet Standard	The school was informed of or became aware of non-compliance and action to correct the issue was not taken within 30 days.

5. Data Security and Information Transparency Rubric

Data Sources: periodic desk audit of school website, and any formal notifications regarding data security or public records compliance.

Data Security and Information Transparency Rubric	
Exceeds Standard	The school has met standard for 3 or more consecutive years, including the most recently completed school year.
Meets Standard	<ul style="list-style-type: none">• The school's website is compliant with I.C. 33-133(7) (data collection, access, and security policy); I.C. 33-320 (continuous improvement plan); and I.C. 33-357 (expenditures updated monthly, contracts, performance reports, and annual budgets).• The school did not experience any issues involving data security this year.• The school did not experience any compliance issue regarding public records requests this year.
Approaches Standard	The school was informed of or became aware of non-compliance and action to correct the issue was taken within 30 days.
Does Not Meet Standard	The school was informed of or became aware of non-compliance and action to correct the issue was not taken within 30 days.

6. Facility and Services Rubric

Data Sources: Verification of meal service program and transportation services via public documents and/or school website, and any notifications of concerns regarding occupancy or safety issued to the school by entities responsible for oversight or enforcement.

Facility and Building Services Rubric	
Exceeds Standard	The school has met standard for 3 or more consecutive years, including the most recently completed school year.
Meets Standard	<ul style="list-style-type: none">• The school's occupancy certificate is current.• The school maintains current safety inspections and drills.• The school provides daily transportation to students in compliance with Idaho Code. The school provides a compliant lunch program.
Approaches Standard	The school was informed of or became aware of non-compliance and action to correct the issue was taken within 30 days.
Does Not Meet Standard	The school was informed of or became aware of non-compliance and action to correct the issue was not taken within 30 days.

7. Operational Compliance Rubric

Data Sources: Periodic observation of enrollment lottery, and if applicable, any corrective action plans issued by the SDE not related to special education, ELL, or college and career readiness (as these are captured elsewhere), or formal notification of late reports or enrollment violations.

Operational Compliance Rubric	
Exceeds Standard	The school has met standard for 3 or more consecutive years, including the most recently completed school year.
Meets Standard	<ul style="list-style-type: none">• Required reports are submitted accurately and on time.• The school maintains a compliant enrollment process.• No correct action plans were issued by the SDE this year.
Approaches Standard	The school was informed of or became aware of non-compliance and action to correct the issue was taken within 30 days.
Does Not Meet Standard	The school was informed of or became aware of non-compliance and action to correct the issue was not taken within 30 days.

FINANCIAL MEASURES

NEAR TERM HEALTH

1. Default

1. Default

Calculation: No calculation.

Data Source: Annual Fiscal Audit Report, Terms of Debt, Other Formal Notifications Received by School.

Default Rubric	
Exceeds Standard	The school has met standard for at least 3 consecutive years, including the most recently completed school year.
Meets Standard	The school is not in default of any financial obligations and did not experience any instances of default during the fiscal year. Financial obligations include, but are not limited to, making payments to vendors and utility services on time, complying with all loan covenants, filing any reports required for maintenance of grants or philanthropic funds, meeting all tax obligations, and operating without financial judgements or property liens.
Approaches Standard	The school experienced one or more instances of minor default during the fiscal year (such as making late payments); however, the school is not currently in default of any financial obligations.
Does Not Meet Standard	School is currently in default of financial obligations.

Appendix C: Charter



Charter School Application Idaho Virtual Academy

A Online Public Virtual Charter School

BEFORE THE IDAHO STATE BOARD OF EDUCATION
CHARTER COMMISSION*

Amended

Originally approved by Butte County School District Board of Trustees,
April 17, 2002.

Approved by Charter Commission on October 28, 2004

Approved as amended June, 2005

Approved as amended March 20, 2007

Approved as amended September 16, 2008

Approved as amended August 17, 2010

Approved as amended October 14, 2014

Submitted By:

The Board of The Idaho Virtual Academy
1965 S. Eagle Road, Suite 190
Meridian, Idaho

"The issue before us now is how to make good on the Internet's power for learning and how to
move from promise to practice."

From: The Report of the Web-Based Education Committee to the President and Congress of the United States

Executive Summary

Commission Application. The Idaho Virtual Academy (IDVA) is presenting this Charter Petition to the Commission seeking to update the Charter as originally approved by the Butte School District No. 111 and thereafter transferred to the Idaho Public Charter School Commission. Due to the statewide nature of the school and its status as a Local Education Agency (LEA) status, we believe it is appropriate for the Commission to act as authorizing entity IDVA. **(See Appendix for petition signatures and for Tracking Form Approval Documentation.)**

Mission and Purpose. IDVA aims to empower students throughout Idaho with an innovative and effective educational program. The school seeks to develop those qualities of mind and character that will help students become active, thoughtful, and responsible citizens. Furthermore, it aims to help students meet high expectations by offering an individualized, rigorous, self-paced, and mastery-based instructional program that incorporates significant parental involvement. This is accomplished through an innovative Internet/Online learning program that connects students, parents, and teachers in a 21st century learning community. A research-based curriculum developed by k12 Inc. is used to prepare Idaho students to meet the educational goals of the school. The self-paced nature of the program means that gifted students can dig deeply into the rich curriculum, while students having difficulty can spend more time attaining mastery. The k12-developed lesson plans and curriculum-based assessments guarantee consistent quality access for all students. **(See Appendix for Accreditation Documentation.)**

Board of Directors. IDVA is a public charter school managed by a non-profit corporation under the Idaho Nonprofit Corporation Act and the Idaho Charter Schools Act. The Board of Directors control and govern the operations of the school and are comprised of individuals throughout the state of Idaho. These individuals are leaders in business, government, and their local community and include parents of students who attend IDVA. The Board conducts regular, special and annual meetings in compliance with provisions of the Idaho Code. The Board is actively involved with k12 Inc. in the selection of administrative personnel who work with the school under the Service Agreement between IDVA and k12 Inc. and has approved of the selection of administrative personnel. The Board is responsible for the selection and adoption of the educational program of the school, as well as the approval/disapproval of recommendations brought to the Board for personnel, programs, policies, and procedures of the school. Pursuant to policy, a member of the Board personally reviews the invoices of IDVA for accuracy prior to approval of payment. Subcommittees of the Board have been established to address various programs and activities of the school. IDVA's Board follows all provisions of the Open Meetings Law of the State of Idaho and maintains minutes of all Board meetings; these minutes are available for public inspection and/or copying, as are all other documents encompassed under the public records laws of the State of Idaho. **(See Appendix for Articles of Incorporation and Amended ByLaws.)**

Type of School. IDVA is a statewide virtual public charter school created under the laws of the State of Idaho. This charter program has been in continual operation since the initial approval of the Charter by the Butte County School District No. 111. The school has never been involved in the conversion or replacement of any existing school.

Educational Program. The IDVA curriculum is provided by k12 Inc. under the control and supervision of the IDVA Board. The curriculum is aligned with the Idaho State Standards. This dynamic curriculum includes an online school component as well as student work performed away from the computer using books, workbooks, a phonics program, math manipulatives science and musical equipment, and other materials that are shipped directly to the student. Idaho-certified teachers oversee the learning of each child in their class by reviewing student work for quality, accuracy, and understanding; by accessing students' online academic records (including daily lessons and assessments); and by communicating directly with the student and family on a regular basis. Teachers also grade student work and are available during school hours via phone or e-mail when students (or adults) have questions. *(See Appendix for Curriculum and Standards Alignment and information regarding k12.)*

Notwithstanding the virtual purpose and operation of the school, IDVA may engage in professional technical programs, either individually or as part of a consortium or organization of other public schools providing virtual technical education, in any and all modes of provision of educational services, including but not limited to virtual education, hybrid model of education and/or traditional school building/classroom setting. This exception to the traditional educational program is in recognition that varying professional technical programs may best be supplemented through a component involving hands on education.

Staff and Administrative Composition. Administrative services are provided to IDVA through a Service Agreement between IDVA and k12, Inc. IDVA Board members are actively involved in the selection and evaluation of administrative personnel for the school. Certified staff will be employed through the use of contracts and in accordance with Idaho statute. School personnel are required to hold the appropriate Idaho teaching certifications and endorsements. IDVA teachers hold highly qualified status under No Child Left Behind Act (NCLB) or are working towards this status on an approved program of instruction.

School Facility and Attendance Area. The school's main administrative office is headquartered in Meridian, Idaho. Administrators, teachers and satellite offices/testing centers are located throughout the state. The location of satellite offices during any given school year is dependent upon administrator locations and student geographical data. In most cases, teachers work from their homes and travel throughout their geographical region to provide educational services to their assigned students. The school's attendance area is the State of Idaho.

Grade Levels and Projected Enrollment. For the 2006-2007 school year, IDVA will be serving students in grades K-10. Through the discretion of the Board of IDVA, as granted by the Idaho Public Charter School Commission, the school has expanded the program to serve grades K-12,.

Funding Sources. Basic funding for the school is provided as available under the Idaho Code as well as through federal funding programs. IDVA also seeks funding to support educational programs from private entities, individuals and governmental programs.

Food Services. As a public virtual charter school, food services are not applicable to this program.

Contract Services. As identified above, a Service Agreement exists between IDVA and k12 for the provision of administrative services, curriculum and materials, and technology services. This Agreement has been amended from time to time, as necessary.

Budget and Fiscal Issues. The IDVA Board approves a balanced budget prior to the beginning of each school year. Budgetary and financial documentation is provided on an annual basis.

Table of Contents

<i>Executive Summary</i>	<i>2</i>
<i>I. Mission and Vision.....</i>	<i>7</i>
<i>II. Educational Program and Philosophy</i>	<i>7</i>
<i>A. Improving Learning and Increasing Opportunities</i>	<i>7</i>
<i>B. Innovative Teaching Methods</i>	<i>8</i>
<i>C. Performance-Based Accountability</i>	<i>9</i>
<i>III. Goals</i>	<i>10</i>
<i>A. Academic Goals:</i>	<i>10</i>
<i>B. Non-Academic Goals:.....</i>	<i>10</i>
<i>IV. Curriculum and Delivery</i>	<i>12</i>
<i>V. Instruction</i>	<i>13</i>
<i>VI. Assessment.....</i>	<i>15</i>
<i>A. State Testing System</i>	<i>15</i>
<i>B. Idaho Virtual Academy Assessment System</i>	<i>15</i>
<i>VII. Health & Safety.....</i>	<i>16</i>
<i>VIII. Governance.....</i>	<i>17</i>
<i>IX. Parent Involvement.....</i>	<i>19</i>
<i>X. Personnel.....</i>	<i>20</i>
<i>Statutory requirements of staff.....</i>	<i>20</i>
<i>Employee benefits</i>	<i>20</i>
<i>Transfer rights</i>	<i>21</i>
<i>Collective bargaining</i>	<i>21</i>
<i>XI. Students</i>	<i>22</i>
<i>A. Admission policy</i>	<i>22</i>
<i>B. Special Education, At-risk, and Students with Disabilities</i>	<i>22</i>
<i>C. Gifted and Talented Students</i>	<i>23</i>
<i>D. Limited English Proficiency Students.....</i>	<i>23</i>
<i>E. Dual Enrollment</i>	<i>23</i>
<i>F. Student Discipline Policy.....</i>	<i>23</i>
<i>G. Advertisement of Student Enrollment Opportunities</i>	<i>28</i>

<i>H. Professional Technical Educational Opportunities</i>	<i>28</i>
<i>XII. Chartering Entity Relations.....</i>	<i>29</i>
<i>XIII. Operation and Potential Liability</i>	<i>30</i>
<i>XIV. Facility and Equipment</i>	<i>31</i>
<i>XV. Annual Audit of Programmatic and Financial Records/ Financial Management.....</i>	<i>32</i>
<i>A. Financial Management and Financial Records.....</i>	<i>32</i>
<i>B. Financial Audit</i>	<i>32</i>
<i>C. Performance Audit.....</i>	<i>32</i>
<i>XVI. Administrative Audit</i>	<i>33</i>
<i>XVII.Statistical Reporting to Commission.....</i>	<i>34</i>
<i>XVII.Two Year Alternative Hybrid-Virtual Pilot Program.....</i>	<i>35</i>
<i>Facility Location - Hours of Provision of Instruction</i>	<i>35</i>
<i>Student Enrollment and Students Served</i>	<i>35</i>
<i>Purpose - Course Offerings and Instruction</i>	<i>36</i>
<i>Staffing</i>	<i>37</i>

I. Mission and Vision

Mission Statement

The Idaho Virtual Academy will empower students of all abilities to achieve excellence in a wide range of academic areas. Highly qualified educators will work alongside Learning Coaches to equip students for the demands and opportunities of the 21st century by providing and supporting a research-based, differentiated, effective and rigorous curriculum.

Vision Statement

Empowering students, teacher and parents today with the tools of tomorrow.

II. Educational Program and Philosophy

An educated person in the 21st century needs to have a solid understanding of fundamental concepts from the core academic subjects. Tomorrow's educated person will also need additional skills and knowledge beyond the core subjects. The school intends to educate students in grades K - 12 throughout Idaho. Our approach is to employ research-based lessons fused to a technologically sophisticated delivery system.

The Idaho Virtual Academy is built upon the premise that, given a comprehensive and mastery-based curriculum, high expectations, technology, strong instructional support, a significant amount of off-line work, guidance from experienced teachers, and a strong commitment from parents (or other caring adults), a well-conceived virtual education program can foster measurable student achievement, serve the unique needs of students and families, and offer a new choice for public education in the 21st century.

A. Improving Learning and Increasing Opportunities

Our academic objective is to improve student achievement. IDVA's educational program is rooted in developing reading, writing, mathematical, and critical-thinking skills through content-rich materials.

Research-Based Approach

At IDVA we use methods and curricula that are backed by research: phonics for reading, basic math facts early, hands-on learning, plenty of "read aloud" and written work for younger children, and more. We also embrace promising new approaches (for example,

adaptive learning via the Web), and we emphasize using multimedia technology (e.g., Flash animation with video and audio plug-ins) in innovative ways. The curriculum we have chosen, k12, has been and continues to be developed and reviewed by recognized leaders in their fields.

Parental involvement is another proven method that distinguishes our program. When parents become active and informed partners in their child's education, test scores rise, drop-out rates fall, and the active pursuit of learning becomes a compelling focus for each family.

The k12 curriculum is standards-based and is designed to meet or exceed the Idaho state standards. A detailed table illustrating the alignment of k12's curriculum with Idaho's standards in has been provided to the Commission and will continue to be provided as each grade level is added. Curriculum for each added successive school year has been provided upon completion.

Special Education Student/Section 504/ADA

The Academy will comply with the Individuals with Disabilities in Education Act ("IDEA"), Section 504 of the Rehabilitation Act ("Section 504"), and the Americans with Disabilities Act ("ADA"). The Academy shall be solely responsible for compliance with Section 504 and the ADA. The Academy has worked diligently to ensure full compliance with the IDEA. As an LEA, IDVA will be responsible for assuring compliance with these programs.

The Academy shall comply with all applicable federal law in regard to services and the education of Limited English Proficient (LEP) students. The Academy has developed and implemented policies and procedures for the provision of, services to ELL students in accordance with guidance published by the Office for Civil Rights of the U.S. Department of Education. These policies and procedures ensure the following:

- Identify students who need assistance;
- Develop a program that in the view of experts in the field, has a reasonable chance for success;
- Ensure that necessary staff, curricular materials and facilities are in place and used properly;
- Develop appropriate evaluation standards, including program exit criteria, for measuring the progress of students, and assess the success of the program and modify it where needed.

B. Innovative Teaching Methods

In the IDVA model, an experienced and certified teacher serves as mentor and team leader to parent team members. Our teachers are charged with overseeing content

coverage and ensuring proper delivery of the instructional system. Our teachers assist both responsible adults and students with curriculum questions. They also provide instructional assistance and make suggestions about employing a variety of learning strategies. As a first priority, teachers are assigned geographically to their students and then on a space-available status. Teachers are available by phone, e-mail, and in-person visits to ensure that each child is progressing towards his or her individual goals. Teachers provide direct instruction to students through the use of the web conferencing tool, Elluminate. IDVA Teachers also conduct face-to-face instructional workshops in mathematics and writing for parents and students. Teachers may conduct a virtual class relating to a specific lesson or subject matter through the use of Elluminate.

Parents (or other responsible adults) guide children through the daily lessons and help ensure that students are learning. Parents also communicate regularly with teachers and help students manage their time. Attendance logs are maintained to track the minutes and hours of student attendance to meet the school's attendance requirements.

Though our delivery of material is unique, our approach to pedagogy is not. To accommodate the diverse learning styles of children, we employ a variety of teaching strategies, including individualized direct instruction or direct instruction through Elluminate, hands-on exploration, use of manipulatives, practice exercises, and "distributed review"--a method of including previous lesson material in a current lesson for the purpose of reinforcing and reviewing the content.

The IDVA program includes detailed instructional guides, clear and intuitive presentation of lessons, a comprehensive on-line help system, technical support, optional challenge problems, and secondary lessons in some subjects.

By setting goals, collecting and grading assignments, giving support and advice, and drawing on their years of experience and training, teachers work to ensure student success. Through the use of ongoing lesson and unit assessments, combined with portfolios and anecdotal records, teachers are intimately familiar with each student's progress.

C. Performance-Based Accountability

IDVA uses technology to alter the typical school day and school year—to change the dynamics of time and learning as well as what is measured and how it is measured.

Students progress through the curriculum at the pace that meets their individual needs. Mastering curriculum early allows students to move ahead and those who need extra time or remediation are able to work at an individualized pace.

Our approach is to focus on measuring *learning*. The Internet- student learning system measures "positive attendance" (i.e., time spent on task)—and allows us to measure learning (as evidenced by mastery of our daily assessments) in "real time." Since IDVA

is a mastery-based program, we continually assess student progress through the curriculum via lesson-, unit-, and semester assessments.

Each student's level of achievement is assessed on a daily basis, according to explicit and measurable achievement standards, dictated by the k12 curriculum.

I. Alternative School Program

Alternative secondary educational programs as defined in the state of Idaho are those programs that provide instructional courses and offer special services to eligible at-risk youth to earn credits toward graduation and enable such students to attain a high school diploma.

IDVA, like many school districts, is faced with a distinctive population of students who are challenged to be successful within the designated educational framework of the district. This population has necessitated the establishment of an alternative secondary schooling program within IDVA. IDVA's alternative school program (Vision) may serve grades 6-12.

Our Alternative School Program is differentiated from our regular school program through the following:

Curriculum and Instruction

- a. Curriculum is provided and supported by K12.
- b. Block system instead of semester system; students take up to two classes at a time for one credit each.
- c. Vision will offer a summer school session.
- d. Teachers have modified the curriculum and aligned it to the state standards. Teachers have completed curriculum maps to focus on the pace of the course and to allow students more time to focus on the essential standards.
- e. Students can earn additional credits via credit recovery courses. The stipulation is they must be passing all current classes before adding a credit recovery course to their schedule.
- f. Students have mandatory live classes along with additional mandatory live small group (Tier II) classes based on assessment/classroom data.

Culture

- a. Monthly school assemblies are held to celebrate student accomplishments.
- b. Students have the opportunity to graduate with honors.
- c. Students are supported by a team that consists of dedicated Teachers, a Student Support Advisor, a Counselor, a Master Teacher, a School Social Worker, an Assistant Principal, and a Principal.

III. Goals

The IDVA Board, administration, and teaching staff share a vision for student success that is measurable and meaningful. We view it as our responsibility to educate the whole child, and feel that the tools for success lie in a strong foundation in academic content. Therefore, we will have both academic goals and non-academic goals, as outlined below. These goals are subject to modification from time to time by the IDVA Board, with approval by the Charter Commission.

A. Academic Goals:

- (1) Students will demonstrate mastery of a curriculum that meets the Idaho Achievement standards and Idaho Graduation Requirements.
- (2) Students will demonstrate their mastery through a variety of measures including participation in the state testing program, curriculum based assessments and conferences with their teachers.
- (2) Students will demonstrate strong proficiency in language arts.
- (3) Students will demonstrate strong proficiency in mathematics.
- (4) Students will develop a strong foundation of knowledge, facts, and skills in History, Geography, Civics, Science, Art, Music, Economics, and other disciplines.
- (5) Students will develop critical reasoning and higher-order thinking skills.
- (6) Students will prepare for a rigorous post-secondary education.
- (7) Students will acquire skills in both art and music as part of their aesthetic development.

B. Non-Academic Goals:

Our primary non-academic goal is to develop those qualities of mind and character that will help students become active, thoughtful, and responsible citizens. Our choice of materials and approach are designed to communicate and build commonly shared values such as honesty, integrity, courage, discipline, compassion, respect for others, and appreciation of the work ethic.

- (1) Through the Curriculum and Educational Program:
 - (a) Students will be responsible for the improvement of their school and local community.

- (b) Students will develop important personal traits such as honesty, courage, loyalty, personal responsibility, perseverance, respect for others, and diligence.
 - (c) Students will develop effective work habits and skills that will prepare them for the demands of school, society, business, government, and civic affairs.
 - (d) Students will rise to meet high expectations of behavior and performance.
 - (e) Students will learn habits of healthy living.
- (2) Students will be expected to complete a senior project approved by the designated School Administrator.
 - (3) School Clubs and Organizations will be encouraged to participate in a community service project.

IV. Curriculum and Delivery

As stated in the Executive Summary, the IDVA virtual charter educational program entails work online but also individual student work away from the computer using books, workbooks, a phonics program, math manipulatives, science and musical equipment, and additional curricular materials (all of which are shipped directly to every family enrolling a student in the school). Lessons have teaching components, practice components, assessments, and optional challenge programs. The self-paced nature of the program allows students to progress at their individual abilities.

Idaho-certified teachers oversee the learning of each student in their class by reviewing student work for quality, accuracy, and understanding; accessing their online academic records and communicating with the student and/or parent (or other responsible adult) on a regular basis at teacher conferences. Teachers grade student work and are available daily via phone or e-mail. Teachers primarily work from their homes. The school administration maintains a Main Office in Boise and satellite offices.

Notwithstanding the virtual purpose and operation of the school, IDVA may engage in professional technical programs, either individually or as part of a consortium or organization of other public schools providing virtual technical education, in any and all modes of provision of educational services, including but not limited to virtual education, hybrid model of education and/or traditional school building/classroom setting. This exception to the traditional educational program is in recognition that varying professional technical programs may best be supplemented through a component involving hands on education.

A detailed version of our curriculum can be obtained upon request to the school's main office.

V. Instruction

IDVA will continue to meet the standards and goals set forth by the Idaho Department of Education, as they are adopted and/or amended. IDVA has adopted the Idaho High School Graduation Requirements as a minimum expectation for high school students.

A Complete Education Foundation

IDVA has a complete curriculum program that meets Idaho's Academic Standards and the subject-area standards. This program includes:

- **Internal Assessments and Individualized Placement:** Internal assessments are built into the on-line components of the school's academic program. These assessments are an integral part of instruction, including initial placement assessments in reading and math to discover the child's current level of competence. Regular assessment (integrated into the lessons) allows us to monitor and foster each child's progress.
- **Mathematics:** IDVA's Math program balances mastery of fundamental skills with critical thinking and problem-solving. The Math program emphasizes an active, multi-sensory approach to ensure that students understand the concrete realities that underlie mathematical concepts. Regular practice and review ensure mastery of basic skills. Online games and animations motivate students and help illustrate concepts, while challenge problems help develop critical-thinking skills.
- **Language Arts:** IDVA's Language Arts/English program builds important reading and writing skills while inspiring a love of literature. Combining Phonics, Literature, Language Skills, and Spelling lessons, the Language Arts/English program emphasizes classic works, teaches writing as a process, and prepares students for standardized tests in language skills and reading comprehension.
- **History:** IDVA's History program, with integrated topics in Geography and Civics, opens young minds and imaginations to far-off lands, distant times, and diverse people. The program emphasizes the *story* in History—a story that includes not only great men and women but also everyday people. The kindergarten History program takes students on a world tour of the seven continents, and provides an overview of American History through a series of biographies of famous Americans. The History program in grades 1-4 tells the story of civilization from the Stone Age to the Space Age. Older students explore major themes and topics in greater depth through a pair of two-year survey courses, one on World History and the other on American History.
- **Science:** IDVA's Science program balances hands-on experience with systematic study of scientific terms and concepts. Students perform many experiments to help them understand scientific principles, and receive guided instruction in important scientific concepts. Exploring life, earth, and physical sciences in each grade, the

science program nurtures curiosity, analytical skills, and an appreciation of how the world is shaped by ongoing scientific and technological advances.

- **Art:** Following the timelines in the History lessons, Art lessons introduce students to great works of art from different cultures and eras, while engaging them in creative activity—painting, drawing, molding with clay, and so on. Students learn to recognize artistic techniques and elements of design, express informed opinions about specific pieces, and develop an appreciation for great works of art.
- **Music:** IDVA's Music program is set up as a successive series of programs. Assuming no prior musical training, the lessons help students learn about and appreciate music, from singing and dancing to learning about rhythm and playing the recorder.
- **Health, Safety, and Physical Education:** Instruction in health, safety, and physical education program is also offered as part of the IDVA curriculum

Each full-time enrolled student is provided access to a computer system (including computer, printer, software, and ISP connection) and various instructional materials (including books, workbooks, science lab equipment, etc.) from the school to support the learning process. These computer systems and printed materials are the property of K12, Inc, and must be returned when the student leaves the school. Each IDVA-provided computer is equipped with a filtering system and each parent must sign an Agreement for Acceptable Use of Technology Policy as it relates to computer content and software. The school provides technical support and troubleshooting for these systems. Computer systems will be upgraded and replaced as needed. Broadband Internet access is made available to families.

VI. Assessment

A. State Testing System

The Academy, as required by law, participates in the state-testing program, including the ISAT and IRI. The School complies with all testing requirements of the state. The data generated from these assessments is used by the Academy as a factor in determining the progress students are making towards meeting the Idaho Achievement Standards. This data is also used by the school to determine areas of curriculum and program improvement.

B. Idaho Virtual Academy Assessment System

The Academy assesses student performance in all subject areas with our own internal assessment system designed to determine how students are meeting the specific goals of the curriculum. These assessments also help the Academy to improve the learning program by providing information on the effectiveness of instructional activities.

The Academy assessment system consists of the following:

Lesson Assessments

In Math, Science, Art, Music, and History, every lesson is followed by a brief assessment. In Language Arts, there are assessments after every grammar, usage, mechanics, and composition lesson. Guided reading has lesson assessments every few days, and spelling and phonics offer assessments after every fifth lesson. These assessments show whether the student has achieved the objectives for that lesson, or whether a review of some, or all, of the lesson is advisable.

Unit and Semester Assessments

In many subjects, the student takes an assessment at the end of a unit. These assessments show whether or not the student has retained key learning objectives for the unit. There are similar semester assessments, with equivalent purposes, in the middle and at the end of a year's worth of content for many subjects. The results of the semester and unit assessments can be used to guide review or additional practice.

The Academy also has a system of qualitative evaluation. At least every two weeks, teachers have conferences (by phone/email) with students and/or parents to review progress and set goals. Each semester, students will be assigned a progress report, reflecting their completed work, their progress toward stated goals, and results from all quantitative assessments. Both quantitative and qualitative information are considered in assigning grades and recommending promotion for individual students.

VII. Health & Safety

IDVA operates a virtual education program. As typically there is no traditional classroom setting, many of the issues of health and safety become the responsibility of the parent in the home.

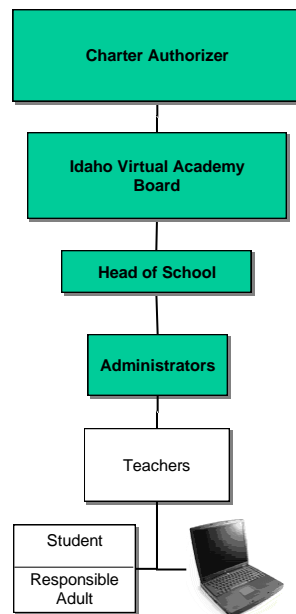
Administrative offices and other facilities are in compliance with all required federal, state and local regulations as required for public schools.

Parents are expected to demonstrate that their children obtain proper immunizations upon admission according to Idaho Statutes (39-4801). Immunization forms and other pertinent medical records are kept (confidentially) by the school administration.

Conduct criminal history checks for all employees in compliance with Idaho Code 33-130.

Additional policies and procedures are implemented by the Board, as needed.

VIII. Governance



The Academy is a nonprofit corporation pursuant to Idaho law. The school is governed pursuant to the ByLaws adopted by the Incorporators and subsequently amended pursuant to the amendment process specified in the ByLaws.

The Board consists of at least five individuals from Idaho who are leaders in their communities across multiple sectors (public, private, non-profit). Some members of the Board are parents of students enrolled in IDVA. The Board meets regularly to oversee the management, operation, activities, and affairs of the school. The Board defines, composes, and revises (as needed) the policies of IDVA and ensures compliance with its charter agreement and applicable laws and regulations.

IDVA Directors do not receive compensation for their service as Board members, and may resign at any time by giving appropriate written notice. Directors may be removed, for cause, by an affirmative vote of two-thirds of the remaining members of the Board. Unless notice is waived by the director, any director facing possible removal must be provided with written notice of the intent to hold a vote on possible director removal seven (7) days prior to the date that the matter will be voted upon. The Board Chairperson will use revised Robert's Rules of Order as deemed necessary. The Board will set its own threshold for minimum Board attendance policies as well as possible sanctions for repeated or habitual unexcused non-attendance.

The IDVA Board of Directors shall be considered the Board of Directors for purposes of the nonprofit corporation. The Board of Directors will elect the officers of the corporation and determine the duration of their term(s). The Board of Directors will govern in accordance with the Articles of Incorporation and the Amended By-Laws of Idaho Virtual Academy, Inc. (See **Appendix** for a copy of the Articles of Incorporation and By-Laws, as amended.)

All meetings of the Board of Directors for the Academy are held in accordance with open meetings laws.

The Board, at its discretion, may vote to expand its membership and/or create subcommittees. Specific responsibilities of the Board are defined in the By-Laws.

This charter is a grant of authority approved by the Commission to the Board of Directors of the Academy pursuant to 33-502A(2), Idaho Code.

IX. Parent Involvement

Parents are actively encouraged to work with the school and parent organizations including:

- Board of Directors, and
- Community/Parent Teacher Advisory Board or other *ad hoc* committees
- Family informational sessions
- Student outings and field trips
- Student community service projects

Parent Involvement in School Affairs

Parents provide feedback regarding the school's program each year through meetings and surveys. Experienced IDVA families serve as mentors to new families.

Parents are trained on the IDVA instructional system. Parents are taught how to be effective instructional coaches, under the guidance of qualified and certified teachers.

X. Personnel

The staffing plans for IDVA will change each year depending upon the needs of the school.

Statutory Requirements of Staff:

The Academy will meet, or exceed, at the discretion of the Governing Board, Idaho Code for statutory requirements:

- a. Criminal background checks (I.C. 33-130)
- b. Non-discriminatory hiring and dismissal policies (Section 504 of Rehab. Act)
- c. Discipline of classified and certificated personnel (I.C. 33-513(5))
- d. A grievance procedure for certificated and noncertificated personnel (I.C. 33-517)
- e. Provision for sick and other leave (I.C. 33-1216)
- f. The accumulation of unused sick leave and transfer (I.C. 33-1217)
- g. Sick leave allowance at retirement (I.C. 33-1228)
- h. Released time for service on state committees and commissions (I.C. 33-1279)
- i. Employment on a contract; to be delivered within time lines given in the Idaho Code.
- j. Withholding the salary of any certificated employee not holding a valid Idaho certificate (I.C. 33-513(1))
- k. Endorsement of certificates by employing school organizations (I.C. 33-1207)
- l. Annual contract issuance requirements for certificated employees (I.C. 33-514)
- m. Renewable contract evaluation and recommendation requirements (I.C. 33-515)
- n. Hiring and evaluation of noncertificated personnel (I.C. 33-517)
- o. Health insurance provision available for noncertificated personnel (I.C. 33-517A)
- p. Proper provisions for personnel files (I.C. 33-518)
- q. All employees will be covered by the Idaho public employees retirement system, federal social security, unemployment insurance and worker's compensation insurance (I.C. 33-5205(3)(k))
- r. Teachers and administrators employed by IDVA will be employed on a written contract in a form approved by the state superintendent of public instruction, conditioned upon a valid certificate being held by such professional personnel at the time of entering upon their duties as required by statute.

Employee Benefits

All staff members of the Charter School are covered by the public employee retirement system (PERSI), federal social security, unemployment insurance, and worker's compensations insurance.

Transfer Rights

Due to the fact that IDVA is chartered under the Charter Commission, transfer rights of teachers to a chartering school district are not clear. However, IDVA would allow a teacher to transfer within the geographical parameters of the statewide program provided by IDVA.

Collective Bargaining

The staff of the Charter School shall be considered a separate unit for the purposes of collective bargaining.

XI. Students

A. Admission policy

The Academy is nonsectarian in its programs, admission policies, employment practices, and all other operations. As a public charter school we do not charge tuition. Additionally, the Academy does not discriminate against any applicant for admission on the basis of ethnicity, national origin, gender, disability, religion, intellectual or athletic ability, or proficiency in the English language.

Enrollment, Over-Enrollment and Student Registration

Enrollment will be reviewed and determined annually, with an enrollment cap to be determined by the Board. Registration applications for new students will be accepted during the enrollment season with the likelihood that the majority of students applying for admission will be admitted, provided that this amount is not in excess of the caps provided by Idaho Code for virtual school growth. In the event that projected enrollment demands exceed curriculum level capacity for the next school term, a lottery process will be implemented to fairly allocate class vacancies.

Currently enrolled students and their siblings will maintain a preferred status unless they express an interest to withdraw. Re-enrollment forms shall be presented to each registered student in the spring of the current school year. Those discontinuing their studies shall not have a reserved position in the next curriculum level. The forms for re-enrollment must be signed and returned in compliance with the process and procedure that has been established by the school's administration, with consideration and approval by the Board. Failure to respond in the time provided shall constitute a waiver of any interest in application or enrollment renewal for the following term.

Lottery

IDVA will conduct a lottery according to the requirements as set out in 33-5205, Idaho Code, as well as any rule adopted by the State Board of Education or State Charter Commission that is applicable to student lotteries held by public charter schools.

B. Special Education, At-risk, and Students with Disabilities

Students with disabilities will be served according to federal and state laws regarding special education, including but not limited to Section 504 of the Rehabilitation Act (Section 504), the Americans with Disabilities Act (ADA), the Individuals with Disabilities Education Act (IDEA), and other applicable legislation. IDVA has a nondiscrimination policy with regard to admissions.

Students with disabilities will be served in accordance with their Individualized Education Programs (IEPs). All IEP's will be developed in accordance with all applicable laws and regulations.

Assurances

The Academy will adhere to all provisions of federal law relating to students with disabilities, including the IDEA, Section 504 of the Rehabilitation Act of 1974, and Title II of the Americans with Disabilities Act of 1990, that are applicable to it.

The Academy will, consistent with applicable law, work to ensure that all students with disabilities that qualify under the IDEA:

- Have available a free appropriate public education (FAPE)
- Are appropriately evaluated
- Receive an appropriate education in the least restrictive environment (LRE)
- Are involved in the development of and decisions regarding the IEP, along with their parents
- Have access to appropriate procedures and mechanisms, along with their parents, to resolve any disputes or disagreements related to the school's or school district's provision of FAPE

C. Gifted and Talented Students

The Academy shall identify and provide services to students who possess demonstrated or potential abilities that give evidence of high-performing capabilities. The Academy will utilize eligibility criteria developed by the Idaho Department of Education. The identification system will align with the Gifted and Talented rules and regulations as identified by IDAPA.

D. Limited English Proficiency Students

As a public school, the Academy will comply with Idaho Code in the identification and education of English Language Learners.

E. Dual Enrollment

IDVA students may participate in dual enrollment as provided in the Idaho Code and IDVA policy.

F. Student Discipline Policy

IDVA operates a virtual educational program. In this setting, many of the issues of student behavior and discipline addressed by a traditional brick and mortar school become the responsibility of the parent as such events are occurring in the home setting.

IDVA as a public school adheres to all federal, state laws and regulations as well as school approved policies and procedures (Code of Conduct) relating to student discipline and the required reports and actions for disciplinary infractions by its students. IDVA complies with all requirements of due process for student disciplinary violations including provisions for notice, fair procedures and a fair hearing.

Administrative disciplinary actions may include, but are not necessarily limited to the following consequences:

- Student conference with Head of School / teacher
- Group conference that may involve student, parent, teacher, and Head of School
- Counseling
- Loss of school privileges

A student cannot be suspended or expelled and thereby deprived of a free education provided in the public schools without due process. Due process requirements guarantee all students the right to fair notice, fair procedures, and a fair hearing. The student and his or her parent or guardians have the responsibility to follow the procedures set forth herein in a respectful and timely fashion.

A student who is accused of misbehavior or a breach of the Code of Student Conduct will be presented to the Head of School or designee by the person having knowledge of the misbehavior or breach of conduct.

- A. **Written Referral:** Violations shall be presented in written form and should be specific, indicating the breach of the Code of Student Conduct for which the referral is being issued.
- B. **Student Notification:** The student will be placed on notice of the violation by the Head of School or designee and afforded an opportunity to explain.
- C. **Initial Conference:** An initial conference (in person or by tele- or video-conference) shall be conducted by the Head of School or designee at each level of discipline.
 - a. **Charges and Evidence:** The Head of School or designee shall confer with the student, explain the charges and evidence against the student, and allow the student an opportunity to present his or her side of the story prior to taking disciplinary action.
 - b. **Parental Assistance:** A good faith effort shall be made by the Head of School or designee to employ parental assistance or other alternative measures prior to suspension, except in the case of emergency or disruptive conditions that require immediate suspension or in the case of a serious breach of conduct.

D. Parental Notification:

- a. **By Telephone or E-mail:** The Head of School or designee shall make a good faith effort to notify the parent by telephone or e-mail of the student's misconduct and the proposed disciplinary action.
- b. **By Written Notice:** Regardless of whether there has been communication with the student's parent by telephone, the Head of School or designee shall, within twenty-four (24) hours of taking disciplinary action, send written notice to the parent describing the disciplinary action imposed and the reason the action was taken.

Violations Leading to Suspension:

The following violations will lead to short-term suspension or other low-level disciplinary action, following the appropriate due-process procedures. Multiple violations at this level may lead to expulsion. [Note: We take the below violations very seriously but in a virtual environment we expect that many of these violations will be a lot less likely to occur.]

Abusive language or conduct: A student who uses or engages in abusive, profane, obscene or vulgar language or conduct in the presence of another person, whether in person or electronically, is guilty of unacceptable conduct.

Cheating: A student who participates in using, copying or providing another student with any test answers or answer keys or another person's work, representing it to be their own work, is guilty of unacceptable conduct.

Disruptive behavior and/or minor infractions: A student who engages in unacceptable behavior or conduct that is disruptive to the educational process, but is not considered a serious breach of conduct, or who violates school rules and policies determined by the Head of School to be minor in nature, is guilty of unacceptable conduct.

Unauthorized access: A student who enters part of the school website that has been denied to them by administrators will be in violation of the school's Technology Use Policy.

False information: A student who knowingly and intentionally reports or gives false or misleading information, either oral or written, which may injure another person's character or reputation or disrupt the orderly process of the school is guilty of a serious breach of conduct.

Interference with the educational process: A student who is guilty of willful disobedience, open defiance of authority of the Head of School or any member of the school staff, violence against persons or property, or any other act that substantially disrupts the orderly conduct of the school is guilty of a serious breach of conduct.

Vandalism: A student who intentionally destroys damages or defaces records or property (whether physical or electronic) owned by or in the possession of the Board or other members of the district staff, is guilty of a serious breach of conduct.

Theft: A student who takes from another person money or other property (whether physical or electronic) belonging to the other person with the intent to permanently deprive the victim of such property is guilty of a serious breach of conduct that may be reported to the proper law enforcement agency.

Robbery: A student who takes money or other property (whether physical or electronic) belonging to another person from another person by the use of force, violence, assault, or threatened use of force or violence is guilty of a serious breach of conduct that may be reported to the proper law enforcement agency.

Sexual Harassment: A student who subjects another person to unwelcome sexual advances, verbal harassment or abuse, pressure for sexual activity, repeated remarks with sexual or demeaning implications, unwelcome or inappropriate touching, or suggestions or demands for sexual involvement accompanied by implied or explicit threats – either in person or on-line – is guilty of a serious breach of conduct. This also includes transmission of sexually inappropriate or explicit material.

Indecent exposure or conduct: A student who exposes or exhibits his or her sexual organs in the presence of others in a lewd or indecent manner, or who intentionally and willingly engages in behavior that is considered lewd, indecent or obscene, either in person or on-line, is guilty of a serious breach of conduct that may be reported to the proper law enforcement agency.

Burglary: A student who enters or remains in a building or property owned or maintained by the Board with the intent to commit theft, vandalism, or some other criminal offense therein, is guilty of burglary unless the premises at the time is open to the public or the student is legally authorized to enter or remain. However, the fact that the premises may be open to the public or that the student may be authorized to enter or remain will not excuse any other offense, violation or other breach of conduct committed by that student while therein. Burglary is a serious breach of conduct that may be reported to the proper law enforcement agency.

Abusive language or conduct directed at a school employee or trustee: A student who uses or engages in abusive, profane, obscene, or other vulgar language or conduct directed at a school employee or trustee is guilty of a serious breach of conduct.

Truancy: A student who is truant from school is guilty of a serious breach of conduct.

Violations leading to Expulsion

The following violations will lead to expulsion, following the appropriate due process procedures.

Weapons: A student who displays or is in possession of an object normally considered a weapon (other than a firearm), such as a knife or club, while attending a school-sponsored activity away from home is guilty of a serious breach of conduct.

Firearms: A firearm is any weapon (including a starter gun, pellet gun, B-B gun, air rifle, or air pistol) that will, or is designed to, or may readily be converted to expel a projectile by the action of an explosive or compressed or forced air. It is the expressed policy of the Board that, with the exception of law enforcement officers, no person shall have in his or her possession any firearm of any nature, including a firearm used for recreational activities, while on a school campus, or other property owned or maintained by the Board, or property designated for school activities.

Battery: A student who intentionally strikes another person against the will of the other person is guilty of a serious breach of conduct that may be reported to the proper law enforcement agency.

Bomb and explosive: A student who is in possession of a bomb, explosive device, or substance or materials intended for use in a bomb or explosive device or substance while at a school-sponsored activity, on Board property, or a chartered bus (unless the material or device is being used as part of a legitimate school-related activity or science project conducted under the supervision of an instructor with the knowledge and consent of the Head of School) is guilty of a serious breach of conduct.

Arson: A student who willfully, by fire or explosion, damages or attempts to damage any building, structure, vehicle or other property owned or maintained by the Board is guilty of a serious breach of conduct that may be reported to the proper law enforcement agency.

Threat: A student who intentionally threatens, by words or act, to strike or cause bodily harm to another person, has the apparent ability to carry out such threat, and causes the other person to have a well-founded fear that he or she is about to be struck or about to suffer such bodily harm is guilty of a serious breach of conduct that may be reported to the proper law enforcement agency.

Internet Use: Any student who abuses the Acceptable Use Policy (included separately) shall be dealt with according to the parameters of the use policy.

Truancy: A student who is habitually truant from school is guilty of a serious breach of conduct.

Alcohol, drugs or drug paraphernalia: A student who possesses or attempts to distribute alcohol, drugs or drug paraphernalia during school-related events or on school site will be in serious breach of IDVA conduct.

G. Advertisement of Student Enrollment Opportunities

IDVA's virtual educational program will continue to seek students from the various geographical regions of the state of Idaho.

IDVA prepares and mails out informational materials regarding their school program. Further, IDVA holds informational sessions in various regions throughout the state to promote the school program. The school maintains a website addressing their educational program, and enrollment opportunities regarding the school.

H. Professional Technical Educational Opportunities

IDVA recognizes that a significant component of the student body will express and interest in and seek out opportunities to participate in professional technical educational opportunities.

IDVA will seek to provide professional technical educational opportunities to IDVA secondary students, either through their own individually developed educational program and/or in combination with other public educational entities (Idaho Public School Districts and/or other Idaho Public Charter Schools) in regional areas. IDVA recognizes the challenges in providing such educational opportunities in a solely virtual setting. While recognizing that some professional technical programs fit within a solely virtual setting, the school also recognizes that some programs will necessitate a hybrid of virtual education and hands on educational experiences while others may involve solely hands on educational format. For such reason, IDVA recognizes an exception to the traditional virtual educational model of IDVA for the possible provision of professional technical educational services.

Curriculum and details of program offerings, which may change from time to time depending upon student interest and the school's needs, will be provided to the Commission.

XII. Chartering Entity Relations

The Public Charter School Commission and the Idaho Virtual Academy will resolve disputes relating to the provisions of the charter following the procedures set forth in 33-5209, Idaho Code, and the applicable rules of the State Board of Education for notice of defect and submission or a corrective action plan.

XIII. Operation and Potential Liability

Upon approval of the initial charter with the Butte County Joint School District 111, the Governing Board of the Academy obtained incorporation as a nonprofit public school, listing the IDVA Board as having the responsibilities and liabilities for the operation of the school. The Articles of Incorporation and Amended By-Laws serve as the policy manual for how the Academy operates.

The Academy operates independently as a Local Education Agency (LEA). The Academy is responsible for its own operation including personnel matters, preparation of a budget, and contracting for services. The Academy maintains a policy of general liability insurance and all other types of insurance necessary to provide coverage for the potential losses described in this paragraph.

The policy of insurance shall have limits of liability not less than that required pursuant to the Idaho Code and shall list the Chartering Entity as an additional insured.

IDVA can sue, be sued, purchase, receive, hold, and convey real and personal property for school purposes, and can borrow money for such purposes.

The Academy's employees, director, and officers shall enjoy the same immunities as employees, director, and officers of public school districts and other public schools.

Pursuant to 33-5204(2), Idaho Code, the Commission shall have no liability for the acts, omissions, debts or other obligations of the Academy. The Academy will defend, hold harmless and indemnify the Chartering Entity against any claim, action, loss, damage, or injury. Liability cost or expense of any kind or nature arising out of the operation of the Academy and/or arising out of the acts or omissions of the agents, employees, invitees, or contractors of the school.

Copies of insurance binders from a company authorized to do business in Idaho for liability insurance (per occurrence and aggregate coverage), property insurance, worker's compensation insurance, unemployment insurance, and any other insurance will be provided to the Commission upon request. All required insurance will be in effect during the operation of the Academy.

XIV. Facility and Equipment

The administration building(s) will be properly licensed and compliant with code with regard to the Americans with Disabilities Act, all OSHA regulations and with all applicable Idaho laws. The building will provide sufficient wiring and communication capabilities to support the high-tech nature and infrastructure of the school. The building will also provide adequate heating, ventilation, lighting, sanitary conditions, and water supply to support the school's administrative staff.

XV. Annual Audit of Programmatic and Financial Records/ Financial Management

A. Financial Management and Financial Records

The Academy's annual budget will be prepared in compliance with all statutes and rules of the State of Idaho including requirements for a public hearing and delivery to the State Department of Education. Copies of the Budget will be provided to the Commission upon Board approval and delivery to the State Department of Education. All Accounting records will be established and maintained in accordance with accounting principles generally accepted in the United States. In addition, the Academy will follow all requirements and regulations as may be set forth from time to time by the State Board of Education and State Department of Education. The Academy operates through funding provided by the State of Idaho and the Federal government. The Academy will continue to seek out private grants and donations to supplement the school's funding. All k12 invoices of the Academy are independently reviewed by a Board member prior to submission to the Board for approval. A separate Board motion is made to address K12 invoices, separate and apart from any other invoices to the school. A detailed report as to the financial status of the Academy and its Budget, including a detailed cash distribution report, is provided at each monthly regular meeting of the Board.

B. Financial Audit

An audit of the School's financial statements is performed annually by an independent Certified Public Accountant. The audit reports, accompanied by the related financial statements are submitted yearly to the Commission pursuant to the requirements of section 33-701(6) & (7), Idaho Code.

C. Performance Audit

Programmatic outcomes are composed of goals for student learning, student attendance, and other objectives described in this application as well as those requirements set forth by the Idaho Charter School Commission. Annually, the school will report in detail its performance against these programmatic objectives, describe deficiencies in performance, and set forth corrective actions for remedying these deficiencies. Additionally, the school will comply with any other requirements that the state might specify at a later point. IDVA has received and will maintain accreditation.

Reports from audit activities will be provided to the Commission staff in the same manner and to the same extent as other documentation and reports provided to Commission staff.

XVI. Administrative Audit

The Board will arrange for the completion of an independent audit process as to various components of the administrative and educational services of IDVA. Reports will be provided to the Board upon the completion of these independent audits.

XVII. Statistical Reporting to Commission

Any statistical reports that are filed by IDVA with the State Department of Education shall also be filed with the Commission. Such Commission filing shall coincide with the timing of filings with the State Department.

XVIII. Two Year Alternative Hybrid-Virtual Pilot Program

Commencing with the 2010-2011 school year, IDVA will commence a two (2) year pilot program for the development and operation of an Alternative Hybrid Component, within the existing Virtual Charter School.

This program will follow and meet all requirements for Alternative Secondary Programs as provided by IDAPA 08.02.03.110, as issued by the State Board of Education and as may be amended from time to time.

Facility Location – Hours of Provision of Instruction:

The location of the Alternative Program will be in a nearby facility, located at 1965 S. Eagle Road, Suite 160, Meridian, Idaho, 83642.

This is a location separate from the regular high school (which is a virtual home-based program) and is at a physical location separate from the Administrative Offices of the Idaho Virtual Academy.

The hours of this program are at hours different from that of the rest of the program. The hours of instruction will be as follows:

7-8 grade program: 8:30-11:30 a.m., Tuesday-Friday

9-12 grade program: 1:00-4:00 p.m., Tuesday-Friday

Student Enrollment and Students Served:

Alternative secondary educational programs as defined in the state of Idaho are those programs that provide special instructional courses and offer special services to eligible at-risk youth to earn credits toward graduation and enable such students to attain a high school diploma.

Students to be Served:

At risk youth are served in this program. The definition of at risk secondary students (in grades 7 through 12) will encompass a student who meets any of the three following criteria in listing “a” through “f” or any of the one criteria in “g” through “m”.

- a. Has repeated at least one grade;
- b. Has absenteeism that is greater than ten percent (10%) during the preceding semester;
- c. Has an overall grade point average that is less than 1.4 (on 4.0 scale) prior to enrolling in the alternative secondary program;
- d. Has failed one or more academic subjects;
- e. Is two or more semester credits per year behind the rate required to graduate;
- f. Is a limited English proficient student who has not been in a program more than three years;
- g. Has substance abuse behavior;
- h. Is pregnant or a parent;
- i. Is an emancipated youth;
- j. Is a previous dropout;
- k. Has serious personal, emotional, or medical problems;
- l. Is a court or agency referral;
- m. Upon recommendation of the school district as determined by locally developed criteria for disruptive student behavior.

Anticipated Initial Enrollment:

For the first year of the pilot program, student enrollment is anticipated to be 150 students, comprised of students in the following grade levels:

7 th	25 students
8 th	25 students
9 th	25 students
10 th	25 students
11 th	25 students
12 th	25 students

Purpose – Course offerings and Instruction:

The purpose of this program will to meet the state-approved vocational technical component of education with offering a Work Experience Course under the supervision of a state certified Work Based Learning Coordinator as well as using k12 developed and provided courses in Business, Entrepreneurship, Marketing, Service Learning and Technology. These course offerings may expand during the course of the program pilot. It is also the intention to have the Achieving your College and Career Goals Course.

Graduation credit may be earned in the following areas:

- Academic Subjects
- Electives
- Approved work-based learning experiences

Non-academic courses i.e., classroom and office aides do not qualify for credits unless such is specifically approved as work-based learning experiences.

Instruction and special services as mandated by the IDAPA rules for Alternative Secondary Education and applicable to the designed program will be compiled with.

Staffing:

IDVA's current employment rolls already include a certificated professional educator holding certification as a Work Based Learning Coordinator as well as a certificated employee holding a vocational-technical teaching certificate.

As career counseling and emotional issues are at serious play for Alternative School Programs, IDVA will initially assign a .50 counselor to the program. This counselor already has alternative school program experience. The school's existing employed psychologist will also provide support services to the program.

Any and all other positions necessitated by this program will be provided by highly qualified and properly endorsed personnel.

Appendix D: Public Charter School Closure Protocol



CLOSURE PROTOCOL

August 2013

Background

This Closure Protocol is aligned to Idaho statute and rule and is designed to reflect best practices for managing the school closure process in an organized manner that protects the state, students and the community.

The Idaho Public Charter School Commission Closure Protocol is based on the Colorado Charter School Sample Closure Framework released in 2011 and publicly available at www.charterschoolquality.org. The Colorado Sample Closure Framework was created through the collaborative work of the Colorado Department of Education, the Colorado League of Charter Schools, and the Colorado Charter School Institute.

The Colorado Charter School Sample Closure Framework incorporated information from the following sources:

1. *Accountability in Action: A Comprehensive Guide to Charter School Closure*. Edited by Kim Wechtenhiser, Andrew Wade, and Margaret Lin. National Association of Charter School Authorizers (2010).
2. Colorado Charter School Institute Closure Project Plan (2010).
3. *Charter Renewal*. Charter Schools Institute, The State University of New York (SUNY).
4. *Pre-Opening Checklist and Closing Checklist*. Office of Education Innovation, Office of the Mayor, City of Indianapolis.
5. *2010-2011 Charter Renewal Guidelines*. District of Columbia Public Charter School Board.

During the revision process, the following additional sources were integrated into the Idaho Public Charter School Commission Closure Protocol:

6. *Navigating the Closure Process*. Matthew Shaw. Authorizing Matters Issue Brief, May 2011. National Association of Charter School Authorizers (2011).

Table of Contents

Introduction..... 4

A Conceptual Timeline for Closure..... 5

Notification and Initial Steps..... 6

Develop / Monitor Implementation
of the Closure Plan..... 8

Finalize School Affairs: Governance
and Operations..... 9

Finalize School Affairs: Finance.....11

Finalize School Affairs: Reporting.....12

Dissolution..... 13



Introduction

Charter school closures happen when a school’s charter is revoked, non-renewed, or relinquished. A number of factors can lead to closure of the school, including poor academic performance, finances, governance, or safety issues. Regardless of the reasons for closure, the board of directors of the public charter school is responsible for managing the closure and dissolution process.² Cooperation between the public charter school board and administrator, authorizer, and other state entities can allow for the facilitation of a smooth process that “minimize[s] disruption for students while ensuring that public funds are used appropriately.”³

The closure process should begin as soon as the authorizer or the charter school board takes initial action to close the school, regardless of whether an appeals process has been completed or the decision has been finalized. This allows the school and authorizer to discuss the potential closure, identify a tentative timeline for the final decision, and work together to establish a closure team and clear paths of communication with each other, stakeholders, and the community.

Whenever possible, the authorizer and public charter school should work together to ensure that the school is able to operate through the completion of the regularly-scheduled school year. Under most circumstances, this should allow adequate time to complete all closure tasks. More importantly, it minimizes instructional gaps for students. However, there are occasions when it is necessary for a school to close mid-year. In these cases, students’ educational transitions should be the highest priority. The school, authorizer, and other state entities must also identify the appropriate closure team and work closely together to prioritize closure tasks and manage their completion in as organized and efficient manner as possible.

Though individual schools should develop closure plans that are tailored to their situation, resources, and needs, all schools should keep the following primary goals in mind:

1. Providing educational services in accordance with the charter and performance certificate until the end of the school year, or the agreed upon date when instruction will stop.
2. Reassigning students to schools that meet their educational needs.
3. Addressing the school’s financial, legal and reporting obligations.

The closure process has many tasks, which are illustrated in the chart below. Based on the circumstances surrounding the closure, not all tasks in this protocol may apply. When the charter school, authorizer, and other state entities meet at the outset of the closure process, they should refer to the Closure Protocol and identify which tasks will be required or necessary. During this meeting, responsible parties and completion dates should be agreed upon to ensure a transparent and smooth closure. The template that follows includes the basic tasks that will usually need to be addressed to close a school; the format allows for the insertion of responsible parties and task deadlines.

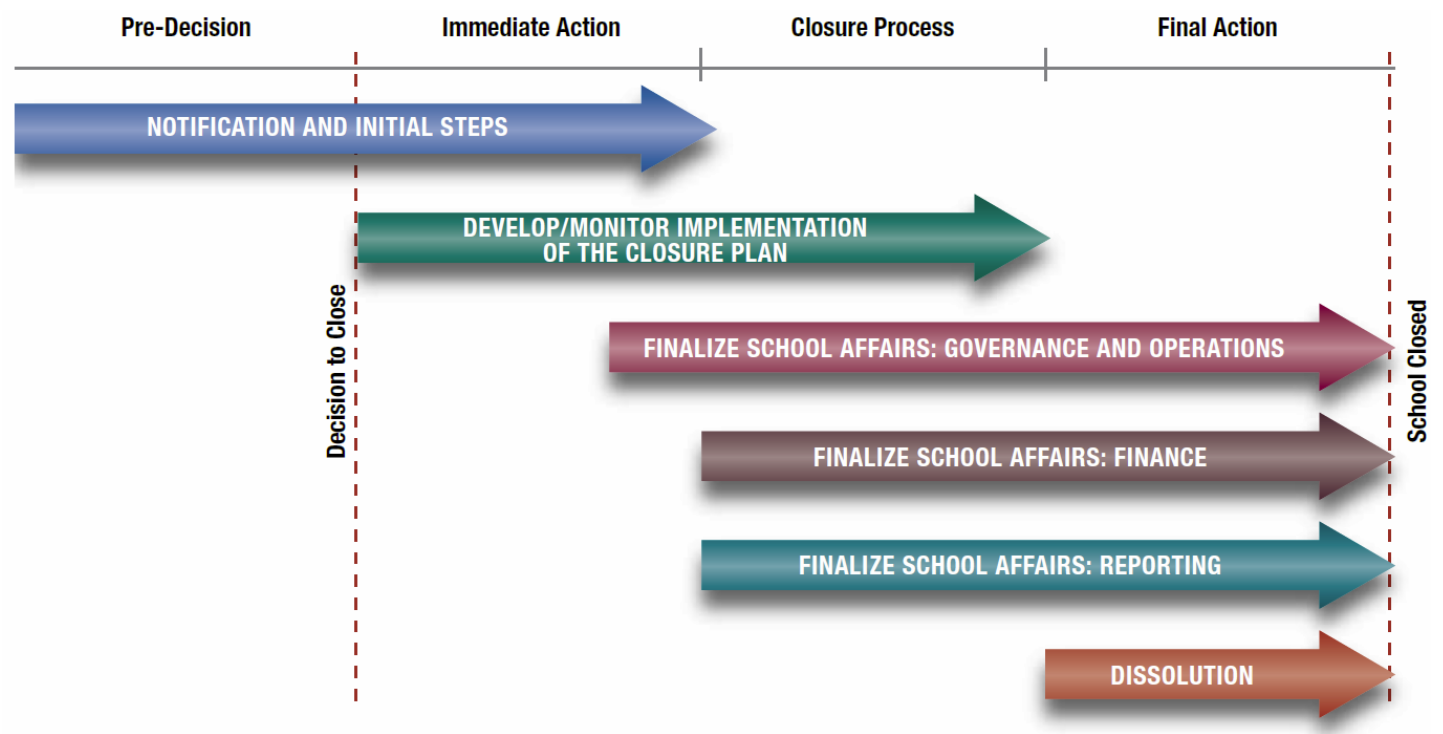
Endnotes

¹ Peyser, J. and Marino, M. “Why Good Authorizers Should Close Bad Schools.” Accountability in Action: A Comprehensive Guide to Charter School Closure. National Association of Charter School Authorizers (2010). Pages 6 and 9.

² I.C. § 33-5212

³ Shaw, M. “Navigating the Closure Process.” Authorizing Matters Issue Brief, May 2011. National Association of Charter School Authorizers (2011). Pages 2-3.

A Conceptual Timeline for Closure



Notification and Initial Steps

DESCRIPTION OF REQUIRED ACTIONS	ENTITIES INVOLVED	INDIVIDUALS RESPONSIBLE	DEADLINE	STATUS
Meet with PCSC and SDE staff Within 3 business days of the authorizer's or school's initial / intended closure decision, the charter school administrator and a representative of the school's board will meet (in-person or via telephone or web conference) with staff representatives of the PCSC and SDE to: <ol style="list-style-type: none"> 1. Review the remaining process for finalizing the closure decision as applicable 2. Review the Closure Protocol and tasks and clarify critical deadlines 3. Identify points of contact for media or community questions 4. Draft communication to staff, families, and affected districts 	School, PCSC, SDE			
Notify Parents / Guardians of Potential Closure <ol style="list-style-type: none"> 1. Within one week of the authorizer's or school's initial / intended closure decision, the charter school will send letters to enrolled families. Notification should include: <ul style="list-style-type: none"> • The reasons for closure. • If applicable, an explanation of the appeals process and likely timeline for a final decision. • Assurance that instruction will continue through the end of the school year or an estimation of when instruction will cease. • Assurance that after a final decision is reached, parents/students will be notified and assisted in the reassignment process. • Public Charter School Closure FAQ. • Contact information for parents/guardians with questions. 	School, PCSC			
Notify School Districts Materially Impacted <ol style="list-style-type: none"> 1. Within one week of the authorizer's or school's initial / intended closure decision, the charter school will send letters to districts materially impacted by the closure decision. Notification should include: <ul style="list-style-type: none"> • The reasons for closure. • If applicable, an explanation of the appeals process and likely timeline for a final decision. • Copy of the letter sent to parents. • Public Charter School Closure FAQ. • Contact information for questions. 	School, PCSC			
Meet with Charter School Faculty and Staff Administrator and charter board chair meet with the faculty and staff to: <ol style="list-style-type: none"> 1. Discuss reasons for closure, status of appeals process (if applicable), and likely timeline for a final decision. 2. Emphasize importance of maintaining continuity of instruction through the end of the school year. 3. Emphasize need to limit expenditures to necessities. 4. Discuss plans for helping students find new schools and need for teachers and staff to have organized student files prepared for transfer. 5. Identify date when last salary checks will be issued, when benefits terminate, and anticipated last day of work. 6. Describe assistance, if any, that will be provided to faculty and staff to find new positions. 	School			
Review and Report on Finances <ol style="list-style-type: none"> 1. Review budget to ensure that funds are sufficient to operate the school through the end of the school year, if applicable. Communicate with the PCSC and SDE regarding financial status and next steps. 2. Limit expenditures to only those in the approved budget and delay approving expenditures that might no longer be necessary until a revised budget is approved. 3. Communicate with the SDE regarding whether there are any anticipated changes to remaining disbursements from the state. 	School, PCSC, SDE			

<p>Send Additional and Final Notifications</p> <ol style="list-style-type: none"> 1. Notify parents and affected school districts in writing after key events (e.g., denial of an appeal) and when the closure decision is final. 2. The letters notifying staff, parents, and other districts of the final closure decision should include: <ul style="list-style-type: none"> • The last day of instruction. • Any end-of-the-year activities that are planned to make the transition easier for parents and students. • Assistance that will be provided to families in identifying new schools. This may include a list of school options; application deadlines or open house dates for traditional public, public charter, or private schools; or individual meetings with families. • Basic information about the process for access and transfer of student and personnel records. 	<p>School, PCSC</p>			
--	-------------------------	--	--	--

Develop/Monitor Implementation of the Closure Plan

DESCRIPTION OF REQUIRED ACTIONS	ENTITIES INVOLVED	INDIVIDUALS RESPONSIBLE	DEADLINE	STATUS
Establish Transition Team, Develop Closure Plan, and Assign Roles 1. Contact appropriate entities to establish a transition team, including: <ul style="list-style-type: none"> • A member of the PCSC staff • A member of the SDE staff • Charter school board chair • Lead administrator from the charter school • Lead finance person from the charter school • Additional members as deemed appropriate 2. Develop plan, review roles of primary entities, identify individuals responsible for closure tasks, and exchange contact information.	School, PCSC, SDE			
Establish a Schedule for Meetings and Interim Status Reports Agree on a meeting schedule to review progress and interim, written status reports to include: <ol style="list-style-type: none"> 1. Reassignment of students and transfer of student records. 2. Identification of long-term storage location of student and personnel records; plan for access and communication to parents regarding access. 3. Notification to entities doing business with the school. 4. The status of the school's finances, including outstanding expenses and payment of creditors and contractors. 5. Sale, dissolution, or return of assets. 6. Submission of all required reports and data to the authorizer and/or state. 	School			
Submit Final Closure Report Submit the completed closure Protocol document and appropriate final closure documents to the PCSC (see the Reporting section for more details).	School			

Finalize School Affairs: Governance and Operations

DESCRIPTION OF REQUIRED ACTIONS	ENTITIES INVOLVED	INDIVIDUALS RESPONSIBLE	DEADLINE	STATUS
Maintain Identifiable Location Maintain the school's current location through the winding up of its affairs or relocate its business records and remaining assets to a location with operational telephone service that has voice message capability.	School			
Protect School Assets Protect the school's assets and any assets in the school that belong to others against theft, misappropriation and deterioration. <ol style="list-style-type: none"> 1. Maintain existing insurance coverage on assets, including facility, until the disposal of such assets in accordance with the closure plan. 2. Negotiate school facility insurance with entities that may take possession of school facility – lenders, mortgagors, bond holders, etc. 3. Obtain or maintain appropriate security services. Action may include moving assets to secure storage after closure or loss of facility. 	School			
Notify Commercial Lenders / Bond Holders (if applicable) If the school has existing loans - Within 10 days after the final decision to close the charter school (after appeals process is complete), notify banks, bond holders, etc., of the school's closure and projected dates for the school's last payment towards its debt and if/when default will occur.	School			
Terminate EMO /CMO Agreement (if applicable) Review the management agreement and take steps needed to terminate the agreement at the end of the school year or prior to the intended closure date. <ol style="list-style-type: none"> 1. The management company should be asked for a final invoice and accounting, including an accounting of any retained school funds and the status of grant funds. 2. The school and the management company should agree upon how the company will continue to provide educational services until the last day of instruction. The school and the management company agree when other services including business services will end.	School			
Notify Contractors and Terminate Contracts <ol style="list-style-type: none"> 1. Notify all contractors, including food service and transportation, of school closure. 2. Retain records of past contracts and payments. 3. Terminate contracts for goods and services as of the last date such goods or services will be needed. 	School			
Notify Employees and Benefit Providers <ol style="list-style-type: none"> 1. Whenever possible, provide employees with formal, written notification of termination of employment at least 60 days before closure to include date of termination of all benefits in accordance with applicable law and regulations (i.e. WARN and COBRA) and eligibility for unemployment insurance pursuant to federal or state law or regulations of the Idaho Department of Labor. 2. Notify benefit providers of pending termination of all employees, to include: <ul style="list-style-type: none"> • Medical, dental, vision plans. • Life insurance. • PERSI, 403(b), or other retirement plans 3. Consult legal counsel as specific rules and regulations may apply to such programs. 	School			

Finalize School Affairs: Governance and Operations (continued)

DESCRIPTION OF REQUIRED ACTIONS	ENTITIES INVOLVED	INDIVIDUALS RESPONSIBLE	DEADLINE	STATUS
Maintain and Organize Records <ol style="list-style-type: none"> Maintain all corporate records related to: <ul style="list-style-type: none"> Loans, bonds, mortgages and other financing. Contracts. Leases. Assets and their sale, redistribution, etc. Grants -- records relating to federal grants must be kept in accordance with 34 CFR 80.42. Governance (minutes, bylaws, policies). Accounting/audit, taxes and tax status, etc. Employees (background checks, personnel files). Employee benefit programs and benefits. Any other items listed in the closure plan. Determine where records will be stored after dissolution. 	School			
Transfer Student Records and Testing Material <ol style="list-style-type: none"> Ensure that all student records are organized and complete Within 10 days of receiving a records request, send student records, including final grades and evaluations, to the students' parent or new district and/or school, including: <ul style="list-style-type: none"> Individual Education Programs (IEPs) and all records regarding special education and supplemental services. Student health / immunization records. Attendance record. Any testing materials required to be maintained by the school. Student transcripts and report cards. All other student records. Document the transfer of records to include: <ul style="list-style-type: none"> Date of transfer (for each individual student file transferred). Signature and printed name of the charter school representative releasing the records. Name and contact information of the receiver's representative. The total number and percentage of general and special education records transferred. 	School			
Inventory Assets and Prepare Federal Items for Pick-up <ol style="list-style-type: none"> Inventory school assets, and identify items: <ul style="list-style-type: none"> Loaned from other entities. Encumbered by the terms of a contingent gift, grant or donation, or a security interest. Belonging to the EMO/CMO, if applicable, or other contractors. Purchased with federal grants or funds (i.e. Charter Start grant) <ul style="list-style-type: none"> Items purchased with federal funds should be listed on the Federal Items Inventory spreadsheet provided by the PCSC. The list should be very detailed and complete, and items should not be sold or re-distributed. Return assets not belonging to school where appropriate documentation exists. Keep records of assets returned. Organize and pack items purchased with federal funds and arrange for PCSC walk-through and pick-up. <ul style="list-style-type: none"> Boxes should be packed, closed, taped, and <i>clearly</i> labeled with name(s) and/or number(s) corresponding to the inventory. PCSC walk-through must be scheduled in advance and must be at least 2 days prior to the scheduled move day. At the time of the walk-through, all federal items must be prepared and distinctly separate from other school assets. If the school's items are not adequately prepared for moving, the PCSC will delay the date for pick-up of federal items. 	School, PCSC			

Finalize School Affairs: Finance

DESCRIPTION OF REQUIRED ACTIONS	ENTITIES INVOLVED	INDIVIDUALS RESPONSIBLE	DEADLINE	STATUS
Maintain IRS 501(c)(3) Status Maintain IRS 501(c)(3) status until final dissolution. Notify IRS regarding any address change(s) and file required tax returns and reports.	School			
Notify Funding Sources / Charitable Partners Notify all funding sources, including charitable partners of school closure. Notify state and federal agencies overseeing grants / programs of school closure.	School			
Review and Revise School Budget <ol style="list-style-type: none"> 1. Review the school's budget and overall financial condition. 2. Make revisions, taking closure expenses into account closure while prioritizing continuity of instruction. Submit budget to PCSC and SDE. 3. Identify acceptable use of reserve funds. 	School, PCSC, SDE			
List all Creditors and Debtors Formulate a list of creditors and debtors and any amounts accrued and unpaid with respect to such creditor or debtor. Note that the creditor list is not the same as the contractor list (above), but should include any contractors with whom the school owes money (based on a contract or invoice). <ol style="list-style-type: none"> 1. Creditors include lenders, mortgage holders, bond holders, equipment suppliers, service providers and secured and unsecured creditors. 2. Debtors include persons who owe the school fees or credits, any lessees or sub-lessees of the school, and any person holding property of the school. 	School			
Notify Debtors and Process Payments Contact debtors to request payment. Process and document received payments.	School			
Determine PERSI Obligations Contact PERSI to determine remaining liabilities for employee retirement program.	School			
Notify and Pay Creditors <ol style="list-style-type: none"> 1. Notify all creditors of the school's closure and request final invoices. 2. Sell appropriate assets. 3. Prioritize and pay creditors in accordance with I.C. § 33-5212(2). Document payments made. 	School			
Itemize Financials Review, prepare and make available the following: <ol style="list-style-type: none"> 1. Fiscal year-end financial statements. 2. Cash analysis. 3. Bank statements for the year, investments, payables, unused checks, petty cash, bank accounts, and payroll reports including taxes. 4. Collect and void all unused checks and destroy all credit and debit cards. Close accounts after transactions have cleared. 	School			
Close Out All State and Federal Grants Close out state, federal, and other grants. This includes filing any required expenditure reports or receipts and any required program reports, including disposition of grant assets.	School, SDE, Fed			
Prepare Final Financial Statement Retain an independent accountant to prepare a final statement of the status of all contracts and obligations of the school and all funds owed to the school, showing: <ol style="list-style-type: none"> 1. All assets and the value and location thereof. 2. Each remaining creditor and amounts owed. 3. Statement that all debts have been collected or that good faith efforts have been made to collect same. 4. Each remaining debtor and the amounts owed. 	School			
Complete Final Financial Audit Complete a financial audit of the school in accordance with statute by a date to be determined by the authorizer. Submit final audit to the PCSC and SDE.	School, PCSC, SDE			
Reconcile with State Reconcile state billings and payments. Reimbursement of funds previously disbursed to the school may be required.	School, SDE			

Finalize School Affairs: Reporting

DESCRIPTION OF REQUIRED ACTIONS	ENTITIES INVOLVED	INDIVIDUALS RESPONSIBLE	DEADLINE	STATUS
Prepare and Submit End-of-Year Reports <ol style="list-style-type: none"> 1. Communicate with the PCSC regarding necessary end-year or annual data or reporting that needs to be submitted and identify deadlines. 2. Prepare and submit annual reports to the authorizer. 	School, PCSC			
Prepare Final Report Cards and Student Records Notice Provide parents / guardians with copies of final report cards and notice of where student records will be sent along with contact information.	School			
Prepare and Submit Final ISEE Report Within 10 days of final closure, submit a final ISEE report to the SDE.	School, SDE			
Prepare and Submit Final Budget and Financial Reporting Within 120 days of final closure, submit a final budget and financial reporting, including final financial audit, to the SDE.	School, SDE			
Prepare and Submit All Other Required State and Federal Reports <ol style="list-style-type: none"> 1. Communicate with the SDE and the federal government to identify any outstanding or final reports required for federal, state, or special programs (special education, Title I, etc.) and confirm deadlines. 2. Prepare and submit reports to the SDE and/or federal government. 	School, SDE			
Prepare and Submit Final Closure Report to the PCSC Submit the completed closure Protocol document and a narrative and/or attachments that outline the following: <ol style="list-style-type: none"> 1. The name and contact information of the individual(s) with whom the PCSC can follow-up after closure if there are questions or issues to be addressed 2. The school's final financial status, including the final independent audit 3. The status of the transfer and storage of student records, including: <ul style="list-style-type: none"> • The school's total enrollment at the start of the final semester • The number and percentage of student records that have been transferred prior to closure • The plan for storage and access to student records after closure, including the signature of the person / entity that has agreed to be responsible for transferring records after closure • A copy of public communication to parents regarding how to access student records after closure 4. The status of the transfer and storage of personnel records, including: <ul style="list-style-type: none"> • The school's total number of staff at the beginning of the final semester • The number and percentage of personnel records that have been distributed to staff and/or new employers • If necessary, the plan for storage and access to personnel records after closure, including the signature of the person / entity that has agreed to be responsible for transferring records after closure • A copy of communication to staff regarding how to access personnel records after closure 5. Additional documentation (inventories, operational info, etc.) may be included with the report 	School, PCSC			

Dissolution

DESCRIPTION OF REQUIRED ACTIONS	ENTITIES INVOLVED	INDIVIDUALS RESPONSIBLE	DEADLINE	STATUS
Dissolve the Charter School (I.C. § 30-3-110) <ol style="list-style-type: none"> 1. Give appropriate notice of the meeting per Open Meeting law and statute, including the intention to vote on the dissolution of the corporation. 2. The charter school board adopts a plan of dissolution indicating to whom the assets of the non-profit corporation will be distributed after all creditors have been paid. (I.C. § 33-5206(9)) 3. Unless otherwise provided in the bylaws, the board of directors votes on the resolution to dissolve. A non-profit corporation is dissolved upon the effective date of its articles of dissolution. (I.C. § 30-3-112) 	School			
Notify the Secretary of State (I.C. § 30-3-112) <ol style="list-style-type: none"> 1. After the resolution to dissolve is authorized, dissolve the corporation by delivering to the Secretary of State for filing articles of dissolution setting forth: <ul style="list-style-type: none"> • The name of the non-profit corporation. • The date dissolution was authorized. • A statement that dissolution was approved by sufficient vote of the board. • If approval of members was not required (commonly true for public charter schools), a statement to that effect and a statement that dissolution was approved by a sufficient vote of the board of directors or incorporators • Such additional information as the Secretary of State determines is necessary or appropriate. 	School			
Notify Known Claimants (I.C. § 30-3-114) Give written notice of the dissolution to known claimants after the effective date of the dissolution. Claimants have 120 days from the effective date of the written notice to submit a claim.	School			
End Corporate Existence (I.C. § 30-3-113) A dissolved non-profit corporation continues its corporate existence, but may not carry on any activities except as is appropriate to wind up and liquidate its affairs, including: <ol style="list-style-type: none"> 1. Preserving and protecting its assets and minimizing its liabilities. 2. Discharging or making provision for discharging its liabilities. 3. Disposing of its properties that will not be distributed in kind. 4. Returning, transferring or conveying assets held by the corporation upon a condition requiring return, transfer or conveyance, which condition occurs by reason of dissolution, in accordance with such condition. 5. Transferring, subject to any contractual or legal requirements, its assets as provided in or authorized by its articles of incorporation or bylaws. 6. Doing every other act necessary to wind up and liquidate its assets and affairs. 	School			
Notify IRS Notify the IRS of dissolution of the education corporation and its 501(c)(3) status and furnish a copy to the authorizer.	School			

“If charter schools are to have any hope of transforming public education, they cannot settle for simply being pretty good or just above average – especially when that average is well below what students need to succeed in the world. From this perspective, charter schools need to be about excellence. Specifically, they need to prove that excellence is possible and achievable at scale and under difficult circumstances, even with students whom others may have given up on.”

“All of those who embark on this perilous journey of hope deserve our deepest gratitude and respect for embracing this challenge with courage, persistence and good faith. But these virtues alone are not enough. Charter schools are not supposed to rest on good intentions and earnest effort; they are supposed to achieve meaningful results demonstrated by a sound body of evidence over the charter term. Charter schools that cannot deliver on that promise, either to their students or the broader public, need to be closed. This is the unpleasant, but imperative responsibility of authorizers.”

-- James A. Peyser and Maura Marino. “Why Good Authorizers Should Close Bad Schools.”¹